

GRRIP I Watershed Analysis for Westport, MA

Estimates of Land Use, Impervious Surface and Annual Nonpoint Source Pollution Loads

Watershed 2

Land Use Types

- Crop Land
- Pasture
- Forest
- Non-Forested Wetland
- Mining
- Open Land
- Participation Rec.
- Spectator Rec.
- Water-based Rec.
- Multi-Fam. Res.
- High Density Res.
- Medium Dens. Res.
- Low Dens. Res.
- Salt Water Wetland
- Commercial
- Industrial
- Urban Open
- Transportation
- Waste Disposal
- Water
- Woody Perennial

Land Use Allocation

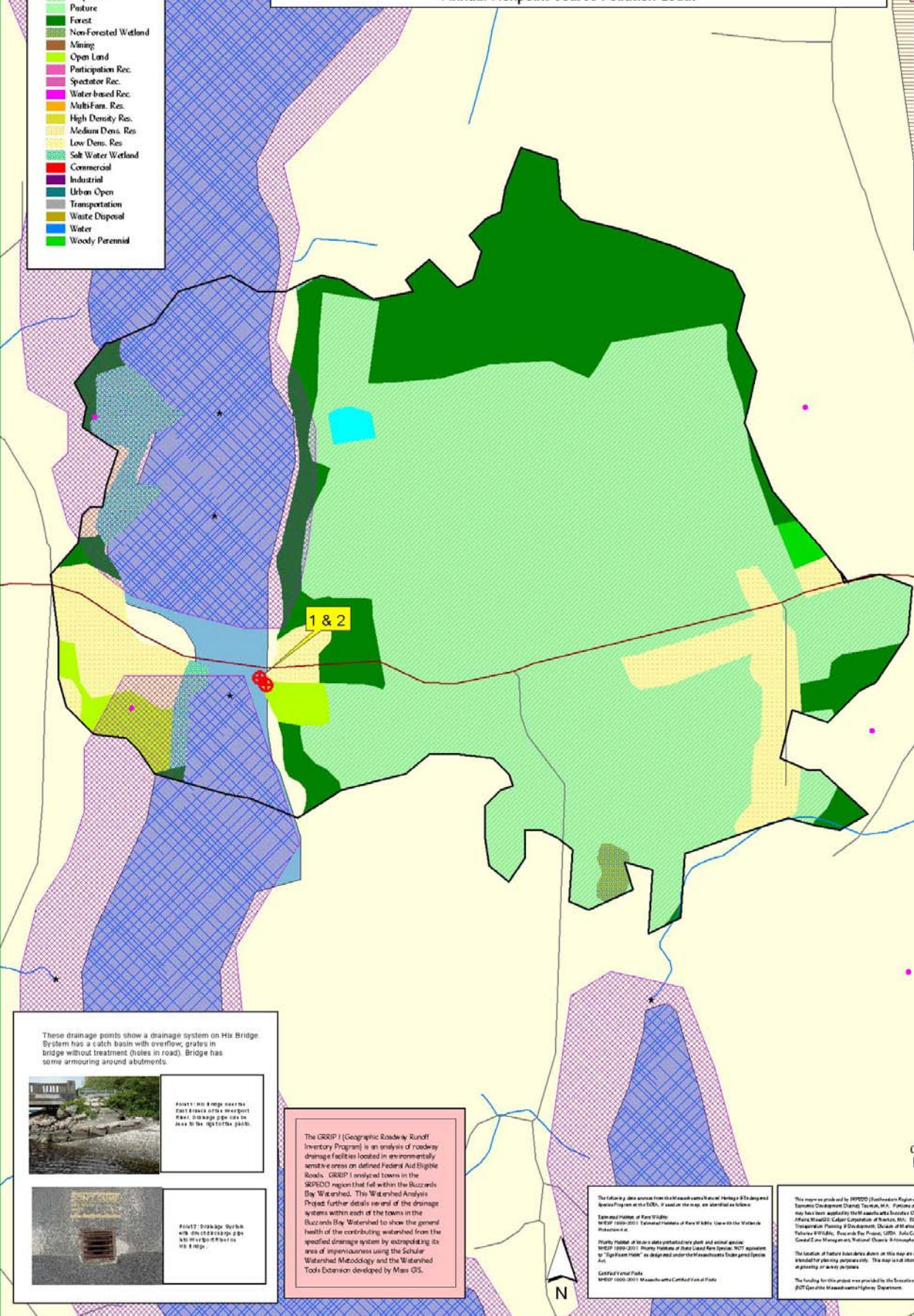
218.3 acres

Forest (61.1%)
 Agriculture (23.4%)
 Open Land (2.7%)
 Recreation (2.4%)
 Commercial (2.0%)
 Industrial (2.0%)
 Urban Open (2.0%)
 Waste Disposal (2.0%)
 Water (2.0%)
 Woody Perennial (2.4%)



Land Use Area in Acres is 218.3
 Impervious Area is 4.0 Acres
 Percentage of Imperviousness = 1.8%
 Avg Annual Nitrogen Load = 777.9 pounds
 Avg Annual Phosphorus Load = 127.8 pounds
 Avg Annual Suspended Solids = 65054.1 pounds

- ### Drainage System
- Potential Vernal Pools
 - Certified Vernal Pools
 - Public Water Supply
 - Public Beach
 - Shellfish Beds
 - Rarebird_nos.shp
 - Rarefish_nos.shp
 - Rarecrustacean.shp
 - Rareoptile.shp
 - Rarebivalve_nos.shp
 - Intermittent Wetland Protect
 - Cold Water Fisheries
 - Anadromous Fish Run
 - Critical Area after Storm Event Wetlands
 - Solid Waste Facility
 - Estimated and Priority Habitats
 - ACEC
 - Zone 2
 - Zone B
 - Rivers and Streams
 - Lakes & Ponds
 - Road Island Towns
 - Other MA Towns
 - Town Boundary
 - Ocean
 - Transmission Lines
 - Railroad
- ### Roads
- Local Rte & Non-Eligible Functional Class Rte (F-0, F-6)
 - Frontage (F-1)
 - Rural Principal Arterial & Urban Ext. (F-2)
 - Rural Minor Arterial & Urban Ext. (F-3)
 - Other Urban Principal Arterial (F-4)
 - Urban Minor Arterial or Rural Major Collector
 - Urban Collector or Rural Minor Collector (F-5)



These drainage points show a drainage system on Hix Bridge. System has a catch basin with overflow, grates in bridge without treatment (holes in road). Bridge has some armoring around abutments.



Point 1: No large rocks fast to block or the overport flow. Storage pipe can be seen to the right of the point.



Point 2: Drainage System with catch basin. No large rocks to block flow.

The GRRIP I (Geographic Roadway Runoff Inventory Program) is an analysis of roadway drainage facilities located in environmentally sensitive areas on defined Federal Aid Eligible Roads. GRRIP I analyzed towns in the SRPEDD region that fall within the Buzzards Bay Watershed. The Watershed Analysis Project further details several of the drainage systems within each of the towns in the Buzzards Bay Watershed to show the general health of the contributing watershed from the specified drainage system by extrapolating its area of imperviousness using the Scholar Watershed Methodology and the Watershed Tools Extension developed by Mass GIS.

The following data sources from the Massachusetts Bureau of Heritage & Landscape and the State Office of the GIS, if used on the map, are identified as follows:
 Town and Water or River Widths: MDPF 1999-2001; Town and Water or River Widths: MDPF 1999-2001; Town and Water or River Widths: MDPF 1999-2001.
 Points: Number of trees in a site potential tree plant and annual species: MDPF 1999-2001; Priority Wetlands of State Land Use Survey: MDPF 1999-2001; "Sign from 1988", as designed under the Massachusetts Transfer of Land Use Act.
 Certified Vernal Pools: MDPF 1999-2001; Massachusetts Certified List of Pools.

This report was produced by SRPEDD (Southwest Regional Planning and Economic Development District) Tisbury, MA. Portions of the aerial digital data may have been supplied by the Massachusetts Executive Office of Environmental Affairs (MassDEA) Capital Corporation of Tisbury, MA. SRPEDD, the Bureau of Transportation Planning & Development, Division of the Federal Highway Administration (FHWA), Division of the Federal Lands, U.S. Fish and Wildlife Service, Coastal Zone Management, National Oceanic & Atmospheric Administration (NOAA), and the Massachusetts Department of Transportation (MassDOT).
 The location of features shown on this map are approximate and are intended for planning purposes only. The map is not intended for legal purposes.
 The funding for this project was provided by the Executive Office of Transportation (EOT) Quality Massachusetts Highway Department.

Watershed Analysis produced using the Watershed Tools Extension developed by Mass GIS.



0 0.2 Miles

