

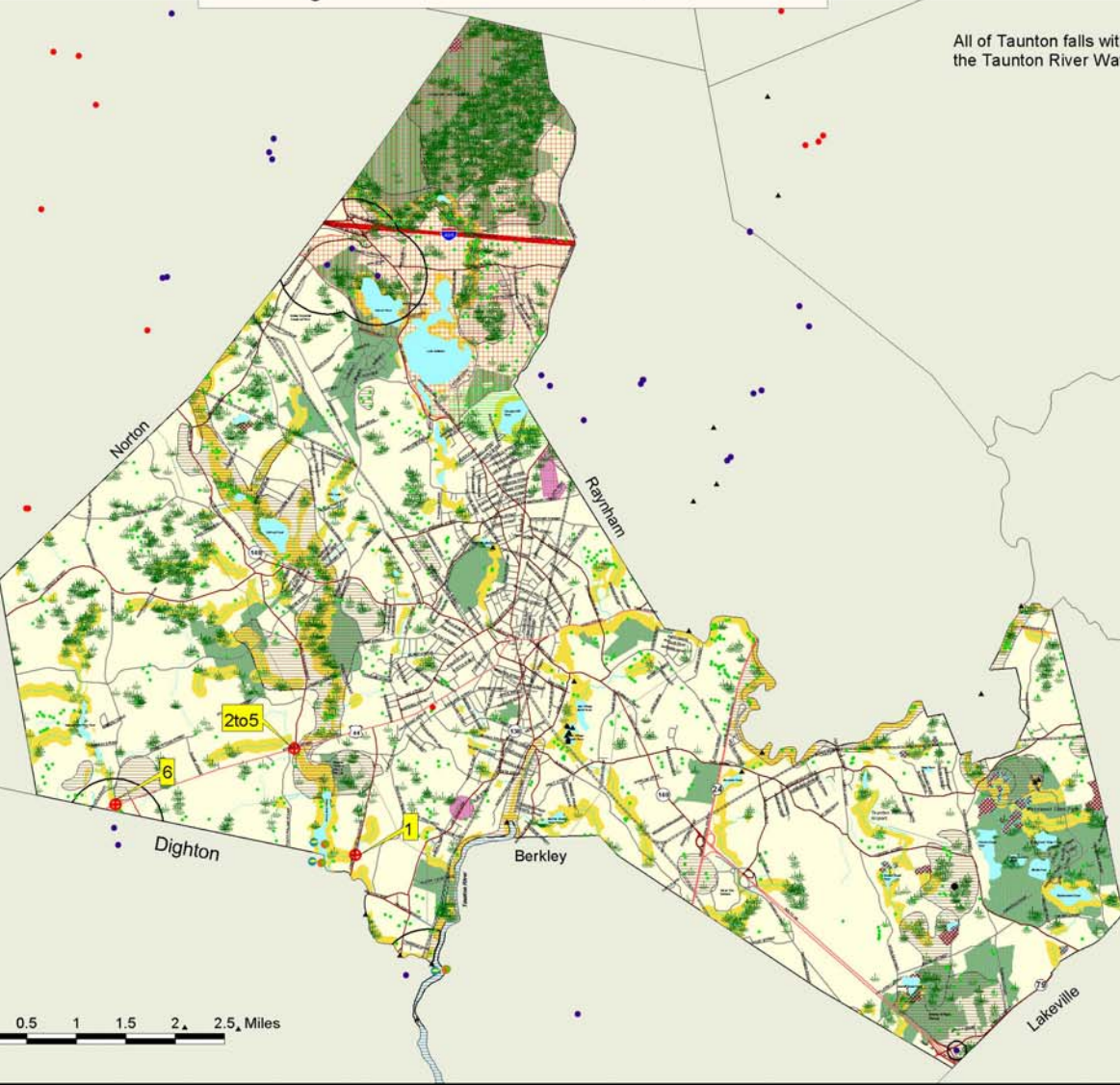
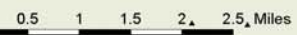
GRRIP II
(Geographic Roadway
Runoff Inventory
Program)

City of Taunton, MA

All of Taunton falls within
the Taunton River Watershed.

- Location of a Storm Water Drainage System in an Environmentally Sensitive Area near a Federally Eligible Roadway**
- Town Boundary
 - Other Massachusetts Towns
 - Rhode Island Towns
 - MSP Natural Lands
 - Riparian Corridors
 - 100 meters buffer
 - ACEC (Areas of Critical Environmental Concern)
 - Estimated & Priority Habitats (NHESP)
 - Open Space (includes Municipal, Permanently Protected, Private Non-Profit, Agricultural, Chapter 61A,B)
 - Wetlands
 - Interim Wetland Protection (1/2 mi radius)
 - Critical Areas after Storm Events/ DMF
 - Approved Zonal Protection Area (DEP)
 - Zone B Protection Area
 - EPA Sole Source Aquifer
 - Outstanding Resource Waters
 - Cranberry Bogs (some Orchard/Nursery)
 - Solid Waste Facilities/CEP
 - Barrier Beaches
 - Transmission Lines
 - Railroads
 - Lakes & Ponds
 - Stream
 - Intermittent Stream
 - Ocean
 - Coldwater Fisheries/Rivers (DFW)
 - Coldwater Fisheries/Ponds (DFW)
 - Public Beach (NOAA)
 - Rare & Sensitive Crustacean (NOAA)
 - Rare & Sensitive BiValve (NOAA)
 - Rare & Sensitive Reptile (NOAA)
 - Rare & Sensitive Fish (NOAA)
 - Rare & Sensitive Bird (NOAA)
 - DEP Seagrass
 - algae
 - eelgrass
 - NHESP Potential Vernal Pools
 - Certified Vernal Pools
 - Sheefish Beds
 - Anadromous Fish Runs
 - Public Water Supplies

- Federal Road Inventory**
- Interstate (F-1)
 - Rural Principal Arterial & Urban Ext (F-2)
 - Rural Minor Arterial & Urban Ext (F-3)
 - Other Urban Principal Arterial (F-4)
 - Urban Minor Arterial or Rural Major Collector (F-5)
 - Urban Collector or Rural Minor Collector (F-6)



1

Warner Blvd. at Swank Inc.: 8' diameter concrete pipe in stone headwall. Structure on both sides of the road are in good shape. Flows into the pond at Swank, Inc. Rip-rap at the head of the pond is cluttered with debris. Large willow population around and in the pond when observed.



2



3



4



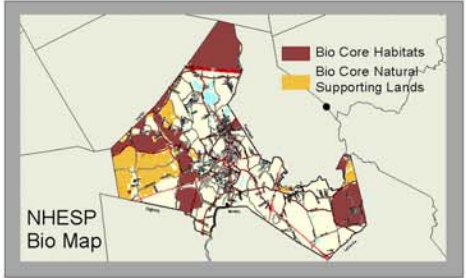
5

North Walker St. Extension- walled in stream channel, narrow and in ill repair. Streambed dry upon observation, flowed intermittently to regularly in the past. Drainage consists of a paved, covered swale from the road, overlying a 3' corrugated steel pipe in a stone headwall. The pipe is rotted and rusted in spots. A newer 2' corrugated steel pipe is located to the right of the 3' pipe and elevated 1' higher in the headwall. The 2' pipe appears to be completely blocked - no daylight. The opposite side of the street has similar structures and appears to flow from a densely vegetated wetland around the old streambed, under Route 44, through forested wetland and eventually to the Three Mile River.



6

Route 44 at the bridge over Segregansett- headwall on the west side of the street is in need of repair. Eroding concrete on headwall, exposed rebar, eroding base on the southwest side. Channelization to the river is occurring adjacent to the bridge. Storm drain grates on the road needed cleaning.



The following data sources were used in the preparation of this map:
 - Massachusetts Department of Transportation (MassDOT) Statewide Roadway Runoff Inventory and Assessment Program (SRPEDD) data
 - Massachusetts Department of Environmental Protection (MassDEP) data
 - Massachusetts Department of Conservation and Recreation (MassDCR) data
 - Massachusetts Department of Public Safety (MassDPS) data
 - Massachusetts Department of Transportation (MassDOT) data
 - Massachusetts Department of Environmental Protection (MassDEP) data
 - Massachusetts Department of Conservation and Recreation (MassDCR) data
 - Massachusetts Department of Public Safety (MassDPS) data



Map Produced by SRPEDD
 Environmental Assessment Program &
 Economic Development District #1
 Taunton, MA
 June 2012

GRRIP II (Geographic Roadway Runoff Inventory Program) is an analysis of roadway drainage facilities in relation to intersecting environmentally sensitive areas or defined Federal Aid "functionally classed" roads. The GRRIP II project analyzed 18 SRPEDD boxes within the Taunton River Watershed. Regions and mapped those storm water drainage systems considered to be located in ecologically sensitive environmental areas.

The Towns are Fall River, Freetown, Lakeville, Middleborough, Croydon, Southwick, Uxbridge, Berkley, Taunton, Raynham, Seekonk, Raynham, Dighton, Abilham, N. Abilborough, North, Mansfield, Plainville.

This map was produced by SRPEDD (Statewide Roadway Runoff Inventory and Assessment Program) in Taunton, MA. Funding for the map was provided by the Massachusetts Executive Office of Environmental Affairs, Massachusetts Coastal Corporation of Taunton, MA, ESRP, the Bureau of Transportation Planning & Development, Division of State Forestry, Division of Fisheries & Wildlife, Rhode Island, USDA, Natural Conservation Service, Coastal Zone Management, National Oceanic & Atmospheric Administration (NOAA), and the Massachusetts Department of Transportation (MassDOT).

The location of feature boundaries shown on this map are approximate and are intended for planning purposes only. This map is not intended for legal engineering or survey purposes.

The funding for this project was provided by the Executive Office of Transportation (EOT) and the Massachusetts Highway Department under the State Road Program.