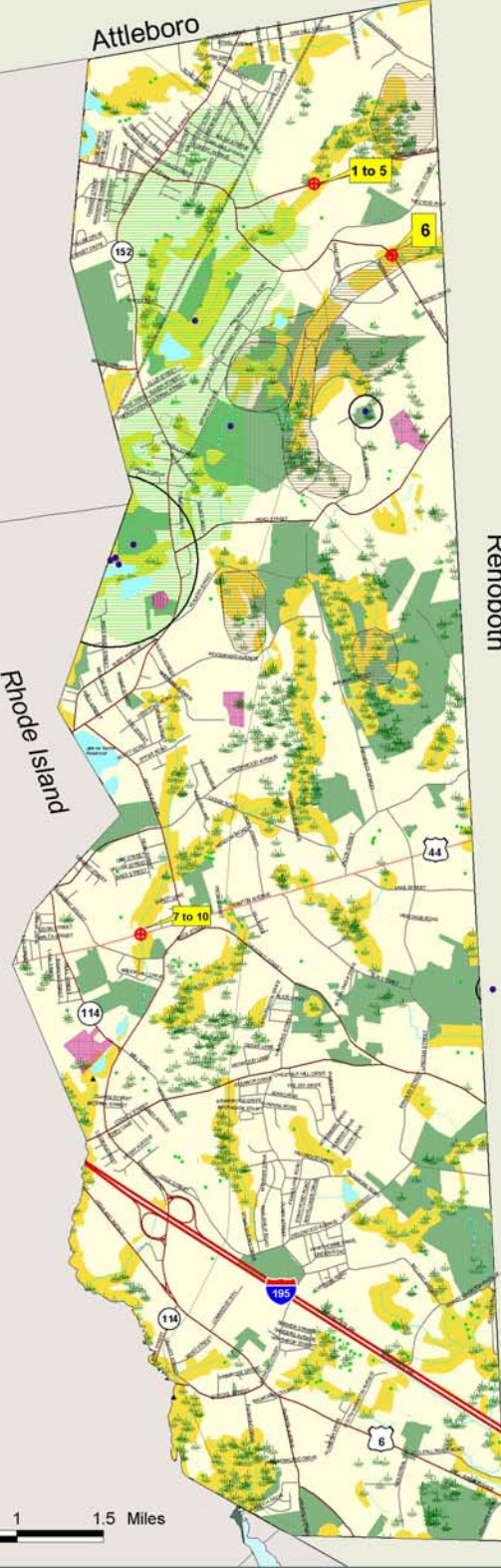


# Town of Seekonk, MA

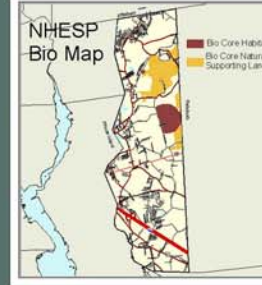
Seekonk falls within the  
Ten Mile and the  
Narraganset Bay Watershed.



- Location of a Storm Water Drainage System in an Environmentally Sensitive Area near a Federally Eligible Roadway**
- Town Boundary
  - Other Massachusetts Towns
  - Rhode Island Towns
  - MRP Natural Lands
  - Riparian Corridors
  - 100 meters buffer
  - ACEC (Areas of Critical Environmental Concern)
  - Estimated & Priority Habitats (NHES)
  - Open Space (includes Municipal, Permanently Protected, Private Non-Profit, Agricultural, Chapter 61A,B)
  - Wetlands
  - Stream Wetland Protection (1/2 mi radius)
  - Critical Areas after Storm Events/ DMF
  - Approved Zoned Protection Area (DEP)
  - Zone B Protection Area
  - EPA Sole Source Aquifer
  - Outstanding Resource Waters
  - Cranberry Bogs (some Orchard/Nursery)
  - Solid Waste Facilities/DEP
  - Barrier Beaches
  - Transmission Lines
  - Railroads
  - Lakes & Ponds
  - Stream
  - Intermittent Stream
  - Ocean
- Environmental Features**
- Coldwater Fisheries/Rivers (DFW)
  - Coldwater Fisheries/Ponds (DFW)
  - Public Beach (NOAA)
  - Rare & Sensitive Crustacean (NOAA)
  - Rare & Sensitive Bivalve (NOAA)
  - Rare & Sensitive Reptile (NOAA)
  - Rare & Sensitive Fish (NOAA)
  - Rare & Sensitive Bird (NOAA)
  - DEP Seagrass
    - algae
    - eelgrass
  - NHESP Potential Vernal Pools
  - Certified Vernal Pools
  - Shellfish Beds
  - Anadromous Fish Runs
  - Public Water Supplies

- Local Rds & Other Non-Eligible Functional Class Rds**
- Federal Road Inventory**
- Interstate (F-1)
  - Rural Principal Arterial & Urban Ext (F-2)
  - Rural Minor Arterial & Urban Ext (F-3)
  - Other Urban Principal Arterial (F-4)
  - Urban Minor Arterial or Rural Major Collector (F-5)
  - Urban Collector or Rural Minor Collector (F-6)

Map prepared by SRPEDD, Inc. for the Town of Seekonk, MA. The map is a digital data map and does not constitute a survey or engineering drawing. It is intended for informational purposes only. The map is not intended for legal, engineering or other purposes. The map is not intended for use in any court of law. The map is not intended for use in any court of law. The map is not intended for use in any court of law.



GRRIP II (Geographic Roadway Runoff Inventory Program) is an analysis of roadway drainage facilities in relation to intersecting environmentally sensitive areas on defined Federal Aid "functionally classed" roads. The GRRIP II project analyzed 18 SRPEDD towns within the Narraganset Bay Watershed Region and mapped those storm water drainage systems considered to be located in critically sensitive environmental areas.

The Towns are Fall River, Freetown, Lakeville, Middleborough, Carver, Scenecoy, Swansea, Berkley, Taunton, Raynham, Seekonk, Rehoboth, Dighton, Attleboro, N. Attleborough, Norton, Mansfield, Plainville.

Woodward Ave (north side) at Rambling Brook

**1**

Woodward Ave (north side) at Rambling Brook

**2**

Woodward Ave (north side) at Rambling Brook

**3**

Woodward Ave. (north side) at Rambling Brook; structure consists of two, 2' corrugated pipes, stone headwall and rip-rap. Asphalt swale at road edge drops >35% to the Brook. Swale was cluttered and chipped. Corrugated pipe is rusted on the bottom and cluttered with sediment and stone. Brook channel was dry when observed.

Woodward Ave (south side) at Rambling Brook

**4**

Woodward Ave (south side) at Rambling Brook

**5**

Woodward Ave. (south side) at Rambling Brook; two, 2' concrete pipes in a large stone headwall. There was some cracking in the left concrete pipe. Some standing water in the Brook channel, no flow.

Pine St. between Sweeney Rd. and Cross St.

**6**

Pine St. (between Sweeney Rd. and Cross St.); structure consists of two, 3' concrete pipes in an earthen and stone headwall. Pipes are in good shape but the headwall was crumbling into the streambed. Stream was dry when observed.

Route 44 at the Rurnins River

**7**

Route 44 at the Rurnins River

**8**

Route 44 at the Rurnins River

**9**

Route 44 at the Rurnins River

**10**

Route 44 at the Rurnins River; there is an 18" concrete pipe in a concrete and stone headwall. The pipe is in good shape. The headwall was collapsed in places and the earthen base has eroded in places. The concrete headwall of the bridge over the Rurnins was cracked and weathered in spots. Some erosion at the base is evident. The Rurnins River was low but had a fairly good flow. Water was clear when observed but a foul odor was present.

This map was produced by SRPEDD (Southeastern Regional Planning and Economic Development District), Taunton, MA. Portions of the source digital data may have been supplied by the Massachusetts Division of Environmental Affairs, Massachusetts Coastal Corporation of Newton, MA, ES&P, the Bureau of Transportation Planning & Construction, Division of Water Fisheries, Division of Fisheries & Wildlife, RWQIA, USDA, Natural Conservation Service, Coastal Zone Management, National Coastal Assessment Administration (NCAAA).

The location of feature boundaries shown on this map are approximate and are intended for planning purposes only. This map is not intended for legal, engineering or other purposes.

The funding for this project was provided by the Executive Office of Transportation (EOT) and the Massachusetts Highway Department under the SRPEDD Program.