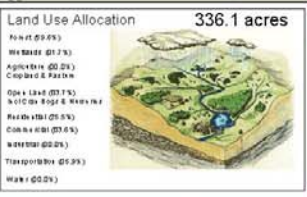


GRRIP II Watershed Analysis for Raynham, MA

Estimates of Land Use, Impervious Surface and Annual Nonpoint Source Pollution Loads

2003 Land Use Types

- Crop Land
- Pasture
- Forest
- Non-Forested Wetland
- Mining
- Open Land
- Participation Rec.
- Spectator Rec.
- Water-based Rec.
- Multi-Fam. Res.
- High Density Res.
- Medium Dens. Res.
- Low Dens. Res.
- Salt Water Wetland
- Commercial
- Industrial
- Urban Open
- Transportation
- Waste Disposal
- Water
- Woody Perennial (Includes Cranberry Bogs and Nurseries)

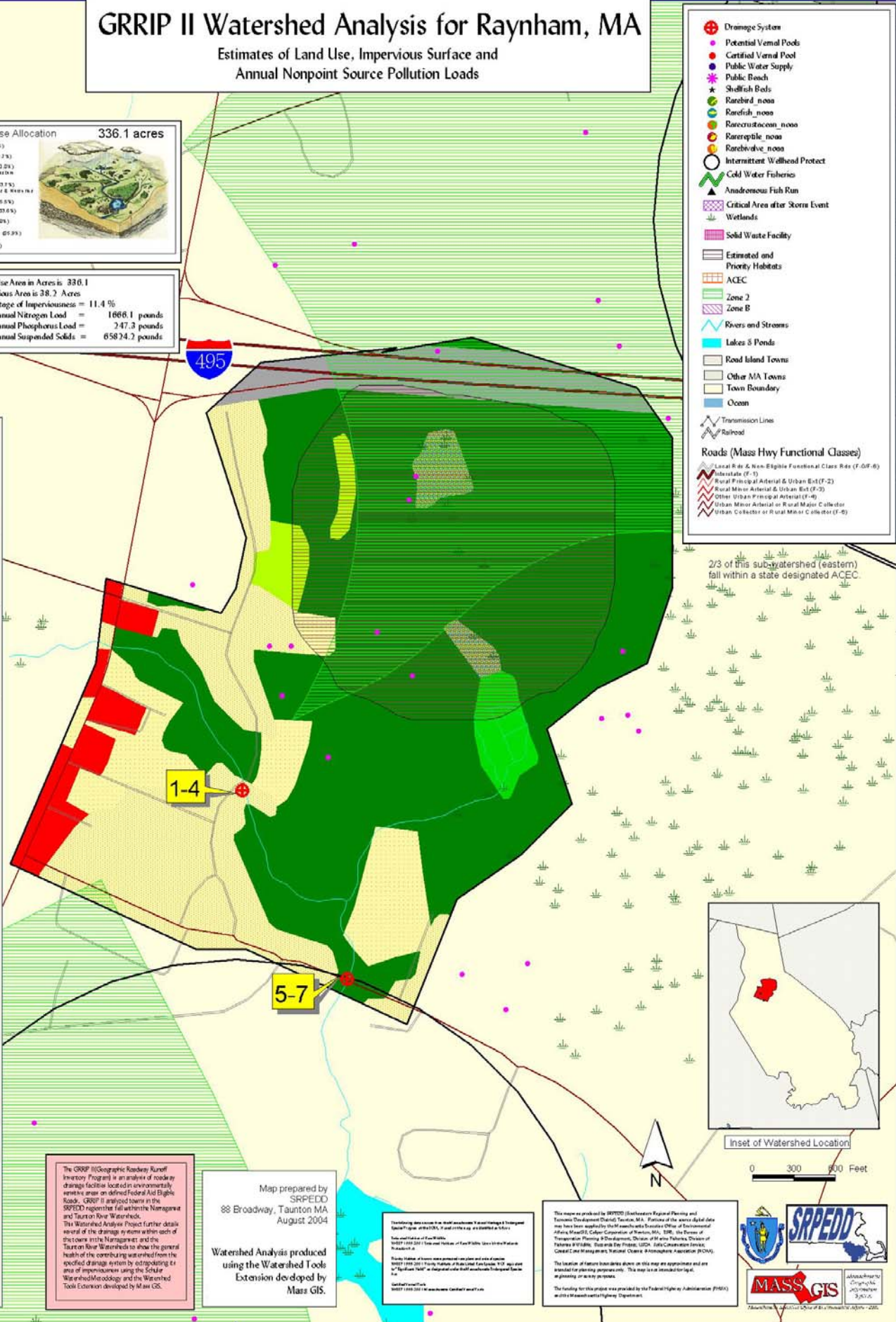


Land Use Area in Acres: 336.1
Impervious Area is 38.7 Acres
Percentage of Imperviousness = 11.4 %
Avg Annual Nitrogen Load = 1666.1 pounds
Avg Annual Phosphorus Load = 247.3 pounds
Avg Annual Suspended Solids = 65874.2 pounds



Oak Street, above O'More Street. Two 2" steel corrugated pipes in crumbling concrete headwall (both sides of Oak Street). Pipes were clean. Outfall into vegetated wetland. No flow in stream channel was observed. Some rilling and erosion around the headwall on the east side of Oak Street. Some broken asphalt seals.

Center Street, between Charles St. and Cadamill Drive. Rilling into gutter Road on the Zone 2 storm waterline, within 10' of, at the base of the road embankment, parallel to Center Street. 4" steel corrugated pipe in headwall. 8" pipe standing water but no flow upon observation. Some rilling in stream channel.



- ### Drainage System
- Potential Vernal Pools
 - Certified Vernal Pools
 - Public Water Supply
 - Public Beach
 - ★ Shellfish Beds
 - ★ Rarebird_nona
 - ★ Rarefish_nona
 - ★ Rarecrustacean_nona
 - ★ Rareinvertebrate_nona
 - ★ Raremammal_nona
 - ★ Rarebirdlife_nona
 - Intermittent Wetland Protect
 - Cold Water Fisheries
 - ▲ Anadromous Fish Run
 - Critical Areas after Storm Event
 - Wetlands
 - Solid Waste Facility
 - Estimated and Priority Habitats
 - ACEC
 - Zone 2
 - Zone B
 - ~ Rivers and Streams
 - ~ Lakes & Ponds
 - Road Island Towns
 - Other MA Towns
 - Town Boundary
 - Ocean
 - Transmission Lines
 - Railroad
- ### Roads (Mass Hwy Functional Classes)
- Local Rd. & Non-Eligible Functional Class Res. (F-0F-6)
 - Interstate (F-1)
 - Rural Principal Arterial & Urban Ext. (F-2)
 - Other Urban Principal Arterial (F-3)
 - Rural Minor Arterial & Urban Ext. (F-4)
 - Other Urban Principal Arterial (F-5)
 - Urban Minor Arterial or Rural Major Collector
 - Urban Collector or Rural Major Collector (F-6)

2/3 of this sub-watershed (eastern) fall within a state designated ACEC.



The GRRIP II (Geographic Roadway Runoff Inventory Program) is an analysis of roadway drainage facilities located in environmentally sensitive areas on defined Federal Aid Eligible Roads. GRRIP II analyzed towns in the SRPEDD together fall within the Narragansett and Taunton River Watersheds. The Watershed Analysis Project further details several of the drainage systems within each of these towns in the Narragansett and the Taunton River Watersheds to show the general health of the contributing watershed from the specified drainage system by extrapolating its area of imperviousness using the Scholar WatershedModelogy and the Watershed Tools Extension developed by Mass GIS.

Map prepared by
 SRPEDD
 88 Broadway, Taunton MA
 August 2004

Watershed Analysis produced using the Watershed Tools Extension developed by Mass GIS.

This map was prepared by SRPEDD (Southeastern Regional Planning and Economic Development District), Taunton, MA. Portions of the aerial digital data map have been supplied by the Massachusetts Department of Environmental Affairs, Massachusetts Coastal Corporation of Taunton, MA, SRP, the Bureau of Transportation Planning & Development, Division of Motor Vehicle, Division of Fisheries & Wildlife, Department of Public Health, State Construction Services, Coastal Law Management, National Oceanic & Atmospheric Administration (NOAA).

The location of feature boundaries shown on this map are approximate and are intended for planning purposes only. This map is not intended for legal, engineering or survey purposes.

The funding for this project was provided by the Federal Highway Administration (FHWA) with Massachusetts Highway Department.

