

Town of North Attleboro, MA

GRRIP (Geographic Roadway Runoff Inventory Program)



PLAINVILLE

FOXBOROUGH

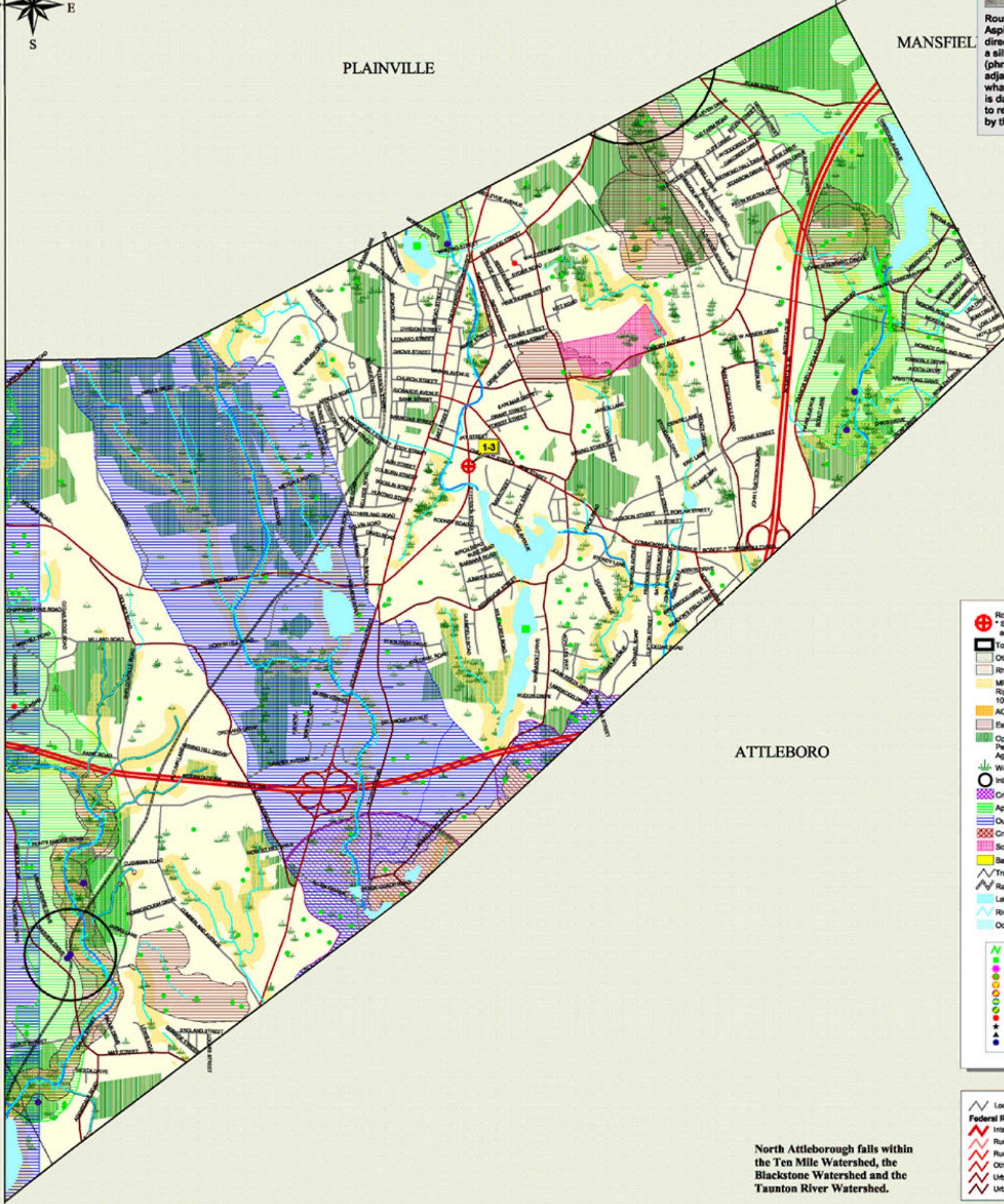
MANSFIELD

ATTLEBORO

North Attleborough falls within the Ten Mile Watershed, the Blackstone Watershed and the Taunton River Watershed.



Route 1 wetland, north, below Chestnut. Asphalt swale to 1' corrugated pipe emptying directly in the wetland. This is an example of a silted wetland overrun by vegetation (phragmites). Runoff from the road and adjacent parking lots have literally filled what was once an open waterbody. Pipe is damaged and filled with 4" of silt. Plans to restore this area have been developed by the Con Comm.



- Road Crossing and Stream Crossing
* Structures including Bridges, Culverts, and Dams
 - Town Boundary
 - Other Massachusetts Towns
 - Rhode Island Towns
 - MRIP Natural Land
Riparian Corridors
100 meters buffer
 - ACEC (Areas of Critical Environmental Concern)
 - Estimated & Priority Habitats (NHES)
 - Open Space (includes Municipal, Permanently Protected, Private Non-Profit, Agricultural, Chapter 61A,B)
 - Wetlands
 - Interim Wetland Protection (1/2 mi radius)
 - Critical Areas after Storm Events/ DMF
 - Approved Zonell Protection Area (DEGE)
 - Outstanding Resource Waters
 - Cranberry Bogs (some Orchard/Nursery)
 - Solid Waste Facilities/DEP
 - Barrier Beaches
 - Transmission Lines
 - Railroads
 - Lakes & Ponds
 - Rivers & Streams
 - Ocean
- Coldwater Fisheries/Rivers (DFW)
 - Coldwater Fisheries/Ponds (DFW)
 - Public Beach (NOAA)
 - Rare & Sensitive Crustacean (NOAA)
 - Rare & Sensitive Bivalve (NOAA)
 - Rare & Sensitive Reptile (NOAA)
 - Rare & Sensitive Fish (NOAA)
 - Rare & Sensitive Bird (NOAA)
 - Certified Vernal Pools
 - Shellfish Beds
 - Anadromous Fish Runs
 - Public Water Supplies

- Local Rds & Other Non-Eligible Functional Class Rds
- Federal Road Inventory
- Interstate (F-1)
- Rural Principal Arterial & Urban Ext (F-2)
- Rural Minor Arterial & Urban Ext (F-3)
- Other Urban Principal Arterial (F-4)
- Urban Minor Arterial or Rural Major Collector (F-5)
- Urban Collector or Rural Minor Collector (F-6)



The following data sources from the Massachusetts Natural Heritage & Endangered Species Program at the NHES, if used on the map, are identified as follows:

Estimated Habitat of Rare Wildlife
NHESP 2007 Estimated Habitats of Rare Wildlife: Use with the Wetlands Protection Act.

Priority Habitat of known state protected rare plant and animal species:
NHESP 2007 Priority Habitats of State Listed Rare Species: NOT equivalent to "Significant Habit" as designated under the Massachusetts Endangered Species Act.

Certified Vernal Pools
NHESP 2007 Massachusetts Certified Vernal Pools

The Geographic Roadway Runoff Inventory Program, or GRRIP, provides an analysis of roadway drainage facilities, located in environmentally sensitive areas, on defined state and local roads. The computer based mapping project included twenty-two separate categories of environmental information, along with other base map layers, to create an overview of a town's environmental and road network information.

This map was produced by SRPEDD (Southeastern Regional Planning and Economic Development District) Taunton, MA. Portions of the source digital data may have been supplied by the Massachusetts Executive Office of Environmental Affairs, MassGIS, Calliper Corporation of Newton, MA, ESRI, Executive Office of Transportation and Public Works, Division of Marine Fisheries, Department of Fish & Game; Buzzards Bay Project; USDA Natural Resources Conservation Service; Coastal Zone Management; National Oceanic & Atmospheric Administration (NOAA); The Nature Conservancy (TNC); Natural Heritage (NH&ESP)

The location of feature boundaries shown on this map are approximate and are intended for planning purposes only. This map is not intended for legal, engineering or survey purposes.

The funding for this project was provided by the Executive Office of Transportation (EOTPW).

Map Produced by SRPEDD
Southeastern Regional Planning & Economic Development
Taunton, MA
September 2007