

# Town of Middleborough Complete Streets Tier 2 Project *Kick-Off Meeting*

Wednesday, May 8, 2019 - 10:00 AM  
Middleborough Town Hall  
10 Nickerson Avenue  
Middleborough, MA 02346



# MassDOT Complete Streets Funding Program

## “The Basics”

The program is divided into the following three tiers:

### **Tier 1**

- Attend a Complete Streets Training (Introductory or Advanced)
- Adopt a Complete Streets Policy

### **Tier 2**

- Complete a Five Year Prioritization Plan  
*Up to \$35,000 in technical assistance funding is available to communities*

### **Tier 3**

- Apply for Construction Funding for selected projects  
*Each community can apply for up to \$400,000 in construction funding to implement the projects on their Prioritization Plan. A community may apply more than once provided that the previous Complete Streets project is complete.*



# MassDOT Complete Streets Funding Program

## Eligible Projects

<b>S - Traffic &amp; Safety</b>	<b>B - Bicycle Facilities</b>	<b>P - Pedestrian Facilities</b>	<b>T - Transit Facilities</b>
<p><b>S1.</b> Pavement markings or signage that provides a new separate accommodation for bicycle, pedestrian or transit modes</p> <p><b>S2.</b> Removal of protruding objects (pedestrian path of travel, bicycle, vehicular or transit facility)</p> <p><b>S3.</b> Pedestrian signal &amp; timing (minor updates)</p> <p><b>S4.</b> Changing pedestrian signal timing (i.e., lead pedestrian interval)</p> <p><b>S5.</b> Radar speed feedback (“Your Speed”) signs</p> <p><b>S6.</b> Reducing corner radii to lower vehicle speeds and/or decrease pedestrian crossing distances</p> <p><b>S7.</b> Additional regulatory signing (for existing regulations)</p> <p><b>S8.</b> Speed humps/speed tables</p> <p><b>S9.</b> Street lighting</p> <p><b>S10.</b> Road diets</p> <p><b>S11.</b> Speed attenuation devices</p> <p><b>S12.</b> Roadway resurfacing or micro surfacing if restriping for new bicycle lanes</p> <p><b>S13.</b> Intersection reconstruction – reducing complexity and crossing distance</p> <p><b>S14.</b> New curbing or edging on uncurbed streets.</p> <p><b>S15.</b> Addition of or widening of shoulders</p> <p><b>S16.</b> Intersection signalization (major updates/upgrades &amp; new Installation)</p> <p><b>S17.</b> Traffic calming measures</p> <p><b>S18.</b> Roundabouts</p> <p><b>SO.</b> Traffic &amp; Safety - Other</p>	<p><b>B1.</b> Improvement of shared use paths (non-safety related)</p> <p><b>B2.</b> Designated bicycle lanes</p> <p><b>B3.</b> Bicycle parking fixtures and/or shelters at transit and other locations</p> <p><b>B4.</b> On-street bicycle parking</p> <p><b>B5.</b> Provide bicycle-safe drain grates and other hardware</p> <p><b>B6.</b> Bicycle boulevards</p> <p><b>B7.</b> Bicycle wayfinding signs</p> <p><b>B8.</b> Shared lane markings (sharrows)</p> <p><b>B9.</b> Bike route signs</p> <p><b>B10.</b> New shared use paths</p> <p><b>B11.</b> Designated Separated Bicycle Lane</p> <p><b>B12.</b> Elimination of hazardous conditions on shared use paths</p> <p><b>B13.</b> Intersection treatments (bicycle signals, bicycle detection, bike lane extensions, turn boxes)</p> <p><b>BO.</b> Bicycle Facilities - Other</p>	<p><b>P1.</b> Sidewalk repairs (tree roots, uplifted panels, etc.)</p> <p><b>P2.</b> Providing ADA/AAB compliant curb ramps</p> <p><b>P3.</b> Detectable warning surfaces</p> <p><b>P4.</b> Pedestrian wayfinding signs</p> <p><b>P5.</b> Providing new sidewalks</p> <p><b>P6.</b> Providing pedestrian buffer zones</p> <p><b>P7.</b> Pedestrian Refuge Islands</p> <p><b>P8.</b> Curb extensions at pedestrian crossings</p> <p><b>P9.</b> Crosswalks</p> <p><b>P10.</b> Widening existing sidewalks</p> <p><b>P11.</b> Accessible pedestrian signals</p> <p><b>P12.</b> New or improved crossing treatments at intersections, midblock, etc. including RRFB’s and HAWK signals</p> <p><b>P13.</b> New pedestrian accommodations at existing traffic signals</p> <p><b>P14.</b> Interim public plazas</p> <p><b>P15.</b> Traffic re-routing to create pedestrian zones</p> <p><b>P16.</b> Providing medians with ADA/AAB-compliant design</p> <p><b>PO.</b> Pedestrian Facilities - Other</p>	<p><b>T1.</b> Improving transit connections for pedestrians, including: ramps, providing and/or moving crosswalks, signing</p> <p><b>T2.</b> Improving transit connections for bicyclists, including: providing secure bicycle parking, signing</p> <p><b>T3.</b> Transit shelter</p> <p><b>T4.</b> Transit signal prioritization</p> <p><b>T5.</b> Bus pull-out areas</p> <p><b>T6.</b> Railroad grade crossings improvements (signs, flange way fill, etc.)</p> <p><b>T7.</b> Transit contra-flow lanes</p> <p><b>T8.</b> Park-n-ride facilities</p> <p><b>T9.</b> Transit-only lanes</p> <p><b>TO.</b> Tansit Facilities - Other</p>

Source: Accommodating Bicycle and Pedestrian Travel: A Recommended Approach; United States Department of Transportation Federal Highway Administration, May 7, 2012.

**Ineligible: Design, Permitting, Right-of-Way**



# MassDOT Complete Streets Funding Program

## Eligible Projects

### Rapid Rectangular Flashing Beacons (RRFBs)



### Curb Ramps



### Bike Lanes



### Transit Shelters



# MassDOT Complete Streets Funding Program

## Program Deadlines

	<b>Tier 1 Policy</b>	<b>Tier 2 Prioritization Plan</b>	<b>Tier 3 Construction Application</b>	<b>Notice to Proceed (NTP)</b>
<b>Round One</b>	Rolling	April 1	May 1	Mid-July/Mid-Late August
<b>Round Two</b>		September 1	October 1	Mid-January/Mid-Late February
<b>MassDOT Response Time</b>	Allow three weeks for Policy Score	Three to four weeks for Plan Review. Allow time for revisions.	Two and a half months for Application Review	One to one and a half months from award notification

Source: MassDOT Complete Streets Funding Program



# Tier 2 Technical Assistance Project

## Scope of Work

### 1 **Document Review/Data Compilation**

Review of available studies and/or data from the town or other sources

### 2 **Existing Conditions Evaluation**

Network Gap Analysis (*location & feasibility to fill gaps*)

ADA Survey (*sidewalk obstructions & slopes, curb ramps*)

Bicycle, Pedestrian, and Transit Infrastructure Evaluation (*presence & condition*)

Roadway & Intersection Crash Analysis (*number & severity*)

### 3 **Project Selection & Prioritization**

Comprehensive evaluation criterion (*scoring system*)

Draft list of projects

Final list of projects (*with cost estimates & construction schedule*)

### 4 **Final Report**

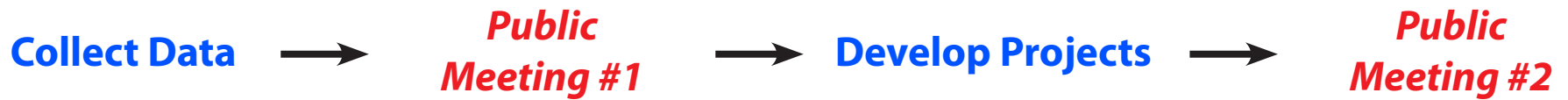
Needs Assessment & Prioritization Plan



# Tier 2 Technical Assistance Project

## Project Timeline

	Tier 1					Tier 2						Tier 3						
Task/Action	Jan-19	Feb-19	Mar-19	Apr-19	May-19	Jun-19	Jul-19	Aug-19	Sep-19	Oct-19	Nov-19	Dec-19	Jan-20	Feb-20	Mar-20	Apr-20	May-20	Jun-20
<b>TIER 1: Training &amp; Policy Adoption</b>																		
<i>Meeting #1 - Kickoff (Project Team)</i>	Mtg																	
Complete Streets Registration & LOI Submittal																		
Tier 2 Technical Assistance Request																		
Draft Complete Streets Policy																		
<i>Meeting #2: Complete Streets Information (Public)</i>			Mtg															
<i>Meeting #3: Policy Adoption (Public)</i>				Mtg														
<b>TIER 2: Prioritization Plan Development</b>																		
<i>Meeting #1 - Kickoff (Project Team)</i>					Mtg													
Document Review/Data Compilation																		
Existing Conditions Evaluation																		
<i>Meeting #2 - Existing Conditions &amp; Projects (Project Team)</i>									Mtg									
Evaluation Criteria Review																		
Project Development & Prioritization																		
<i>Meeting #3 - Draft Prioritization Plan (Project Team)</i>												Mtg						
Final Prioritization Plan Submission																		
Final Needs Assessment Report Submission																		
<b>TIER 3: Project Construction Funding</b>																		
Tier 3 Application Package Submission																		



# Tier 2 Technical Assistance Project

## Deliverables

### massDOT MassDOT Complete Streets Funding Program Project Prioritization Plan

FOR EXAMPLE ONLY

Municipality SELECT  
MassDOT District --

Date 1/23/2018  
Name/Title Bill Murray, DPW Director

Project Details			EJ	Complete Streets Location			Project Origin and Type		Complete Streets Needs					Complete Streets Funding Request			Construction Schedule			
Rank	Project Name	Project Description	Environmental Justice Population	Project Limits	Project Start Location: X,Y Coordinates (MA State Plane meter)	Project End Location: X,Y Coordinates (MA State Plane meter)	Complete Streets Project Origin (planning documentation or supporting analysis)	Complete Streets Project Type (refer to the Eligible Projects Worksheet)	Safety	ADA Accessibility	Pedestrian Mobility	Bicycle Mobility	Transit Operations and Access	Freight Operations	Will this project be in Coordination with other Communities? (list, if applicable)	Total Estimated Project Cost	Complete Streets Funding Requested	Other Funding Source(s) and Amount (if applicable)	Anticipated Construction Duration (number of months)	Desired Construction Start Date (month/year)
1	Main/North Street Mini-Roundabout	Installation of a mini-roundabout at the Intersection of Main Street & North Street	No	200' east & west of Main & 200' north and south of North street	620000, 226000	620400, 225600	HSIP High Crash location	S10. Road diets	X						No	\$240,000	\$240,000	0	6	July-16
2	Gunner Street Sidewalk to Elementary School	Add 500' of missing sidewalk on Gunner Street	YES	from 22 Gunner Street to 36 Gunner Street, Elementary school	555555, 230000	555534, 230121	Network gap	P5. Providing new sidewalks	X	X	X				No	\$25,000	\$20,000	\$5000 Chapter 90	1	August-16
3	Local bus route Transit Shelter Improvement	Installation of 5 Transit shelters along Laurel Street (Route 999)	YES	5 miles along Laurel Street from A Street to Q Street	589000, 221000	620900, 225200	Transit Operations & access Study	T3. Transit shelter				X			No	\$50,000	\$50,000	0	4	September-16
4	Superb Street Separated Bike Lane	Construction of 1 mile of Separated Bike Lane on Superb Street	No	1 mile Along Superb Street	589000, 221499	620900, 225299	Bike/Ped Audit	B11. Designated Separated Bicycle Lane			X				No	\$1,000,000	\$350,000	650,000 Mass Works Grant	8	July-16
5																				

## 5 Year Project List (Minimum of 15 projects)

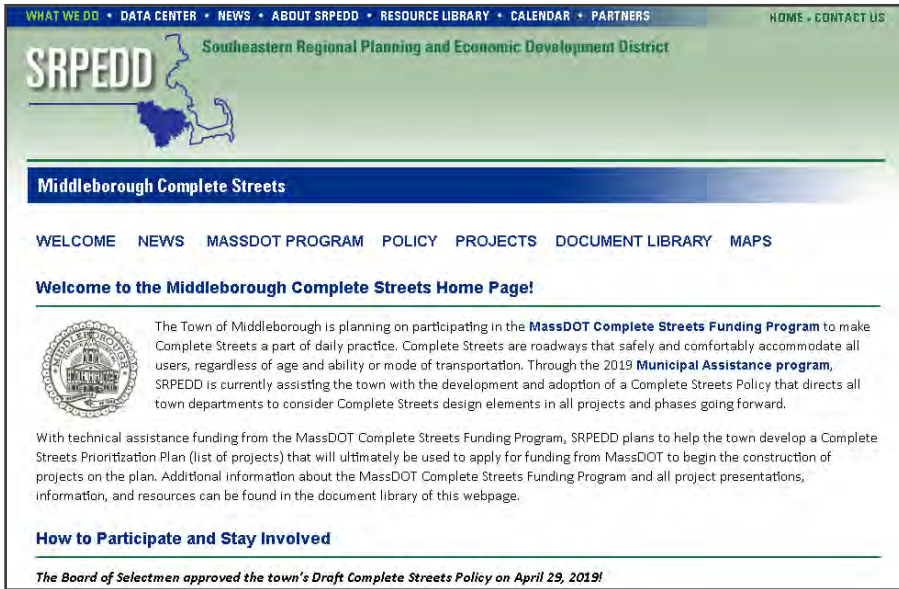
- Project Details (Rank, Name, Description)
- Environmental Justice Populations
- Project Location (Limits, Start & End XY coordinates)
- Project Origin & Type (Study/Analysis, Elements)
- Complete Streets Needs (Core Items, Coordination)
- Project Funding (Cost, CS Funding, Other Funding)
- Project Construction Schedule (Duration, Start Date)



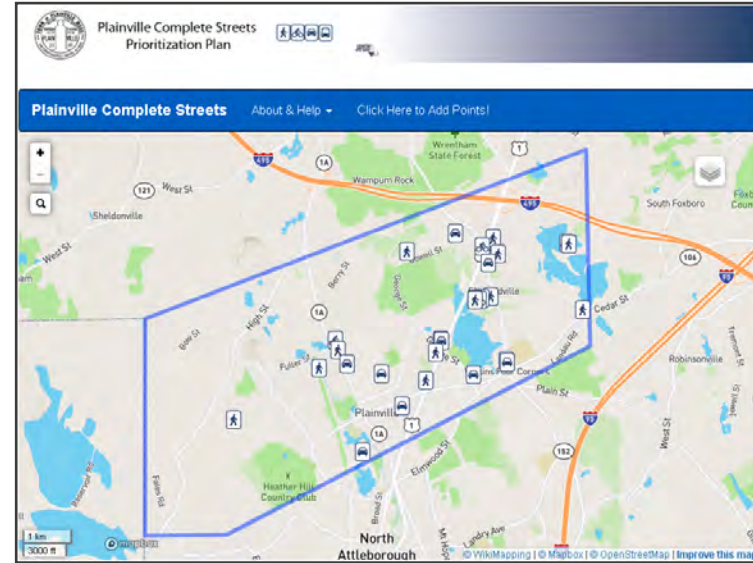


# Public Participation

## Websites



## Online Crowdsource Map



## Public Meetings

### #1: Existing Conditions & Project Development *September*

- Review Data Collection Results
- Share Public Input
- Develop Draft Projects

### #2: Draft Prioritization Plan *November/December*

- Review Projects
- Collect Feedback



# Areas of Focus Discussion

## General Questions

Are there intersections with safety issues?

Where are the high volume bike/ped trip generators?

Are there locations that have ADA issues?

Where are known bicycle routes in town?

Can improvements be made to the existing transit service?

Any plans for off-road shared use paths?

***Grab a marker and tell us  
where to focus!***



# Questions?

## Contacts

### **Andrew Sukeforth**

*Assistant to the Town Manager*

sukeforth@middleborough.com

508.947.0928

www.middleborough.com



### **Jed Cornock, AICP**

*Principal Comprehensive Planner &  
Contract Coordinator*

jcornock@srpedd.org

508.824.1367 ext. 213

www.srpedd.org

### **Jackie Jones, AICP**

*Principal Transportation Planner*

jjones@srpedd.org

508.824.1367 ext. 230

www.srpedd.org

