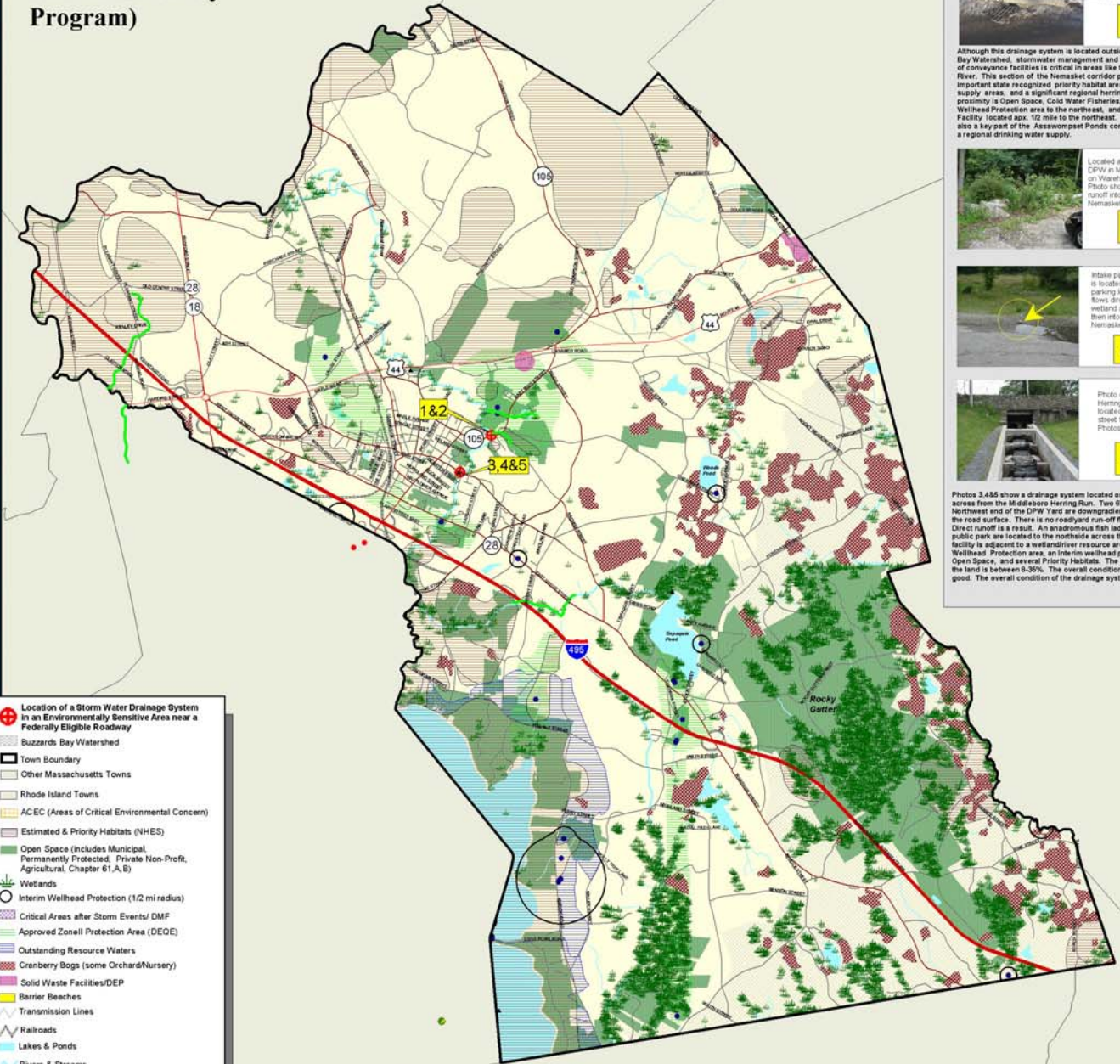


# Town of Middleboro, MA

## GRRIP (Geographic Roadway Runoff Inventory Program)



**1**

This bridge is located on the Nemasquat River at Rt 105 and Sachem Sts between Morfello and Carpenter Sts.

**2**

Located on the Nemasquat River at Rt 105 and Sachem Sts between Morfello and Carpenter Sts across from Photo (1) above.

Although this drainage system is located outside the Buzzard's Bay Watershed, stormwater management and the maintenance of conveyance facilities is critical in areas like the Nemasquat River. This section of the Nemasquat corridor provides important state recognized priority habitat areas, Zone II water supply areas, and a significant regional herring run. Also in proximity is Open Space, Cold Water Fisheries, an Intermittent Wetland Protection area to the northeast, and a Solid Waste Facility located approx. 1/2 mile to the northeast. It is also a key part of the Assawompset Ponds complex, a regional drinking water supply.

**3**

Located at the DPW in Middleboro on Wareham St. Photo shows direct runoff into the Nemasquat River System.

**4**

Intake pipe (in circles) is located at the DPW parking lot. Pipe flows directly into a wetland area and then into the Nemasquat River.

**5**

Photo of the Herring Run located across the street from Photos 3&4.

Photos 3&4&5 show a drainage system located on Wareham St. across from the Middleboro Herring Run. Two 8" PVC pipes at the Northwest end of the DPW Yard are downgradient and even with the road surface. There is no roadway run-off flow attenuation. Direct runoff is a result. An anonymous fish leader and a public park are located to the northside across the street. The facility is adjacent to a wetland resource area, a Zonal Wetland Protection area, an Intermittent wetland protection area, Open Space, and several Priority Habitats. The overall slope of the land is between 0-30%. The overall condition of the road is good. The overall condition of the drainage system is poor.

**Location of a Storm Water Drainage System in an Environmentally Sensitive Area near a Federally Eligible Roadway**

- Buzzard's Bay Watershed
- Town Boundary
- Other Massachusetts Towns
- Rhode Island Towns
- ACEC (Areas of Critical Environmental Concern)
- Estimated & Priority Habitats (NHES)
- Open Space (includes Municipal, Permanently Protected, Private Non-Profit, Agricultural, Chapter 61A,B)
- Wetlands
- Intermittent Wetland Protection (1/2 mi radius)
- Critical Areas after Storm Events/ DMF
- Approved Zonal Protection Area (DEOE)
- Outstanding Resource Waters
- Cranberry Bogs (some Orchard/Nursery)
- Solid Waste Facilities/DEP
- Barrier Beaches
- Transmission Lines
- Railroads
- Lakes & Ponds
- Rivers & Streams
- Ocean

**Local Rds & Other Non-Eligible Functional Class Rds**

**Federal Road Inventory**

- Interstate (F-1)
- Rural Principal Arterial & Urban Ext (F-2)
- Rural Minor Arterial & Urban Ext (F-3)
- Other Urban Principal Arterial (F-4)
- Urban Minor Arterial or Rural Major Collector (F-5)
- Urban Collector or Rural Minor Collector (F-6)

**Water Quality Indicators**

- Coldwater Fishes/Rivers (DPW)
- Coldwater Fishes/Ponds (DPW)
- Public Beach (NOAA)
- Rare & Sensitive Crustacean (NOAA)
- Rare & Sensitive Invertebrate (NOAA)
- Rare & Sensitive Reptile (NOAA)
- Rare & Sensitive Fish (NOAA)
- Rare & Sensitive Bird (NOAA)
- Certified Vernal Pools
- Shellfish Beds
- Anadromous Fish Runs
- Public Water Supplies



THIS DOCUMENT PREPARED FOR THE MASSACHUSETTS REGIONAL PLANNING AND ECONOMIC DEVELOPMENT DISTRICT TAUNTON, MA. PORTIONS OF THE SOURCE DIGITAL DATA MAY HAVE BEEN SUPPLIED BY THE MASSACHUSETTS EXECUTIVE OFFICE OF ENVIRONMENTAL AFFAIRS; MASSGIS; CALDER CORPORATION OF NEWTON, MA; ESRI; THE BUREAU OF TRANSPORTATION PLANNING & DEVELOPMENT, DIVISION OF MARINE FISHERIES, DIVISION OF FISHERIES & WILDLIFE; BUZZARD'S BAY PROJECT; USGS; SOILS CONSERVATION SERVICE; COASTAL ZONE MANAGEMENT; NATIONAL OCEANIC & ATMOSPHERIC ADMINISTRATION (NOAA).

Map Produced by SRPEDD  
Southeastern Regional Planning & Economic Development  
Taunton, MA  
June 2008



The GRRIP (Geographic Roadway Runoff Inventory Program) is an analysis of roadway drainage facilities in relation to intersecting environmentally sensitive areas on defined Federal Aid "functionally classed" roads. The GRRIP project analyzed 14 SRPEDD towns within the Buzzard's Bay Watershed Region and mapped those storm water drainage systems considered to be located in critically sensitive environmental areas.

The Towns are Acushnet, Carver, Dartmouth, Fairhaven, Fall River, Freetown, Lakeville, Marion, Mattapoisett, Middleborough, New Bedford, Rochester, Wareham, Westport

The location of feature boundaries shown on this map are approximate and are intended for planning purposes only. This map is not intended for legal, engineering or survey purposes.

The funding for this project was provided by the Executive Office of Transportation (EOTC) and the Massachusetts Highway Department under the STP Transportation Enhancements Program.