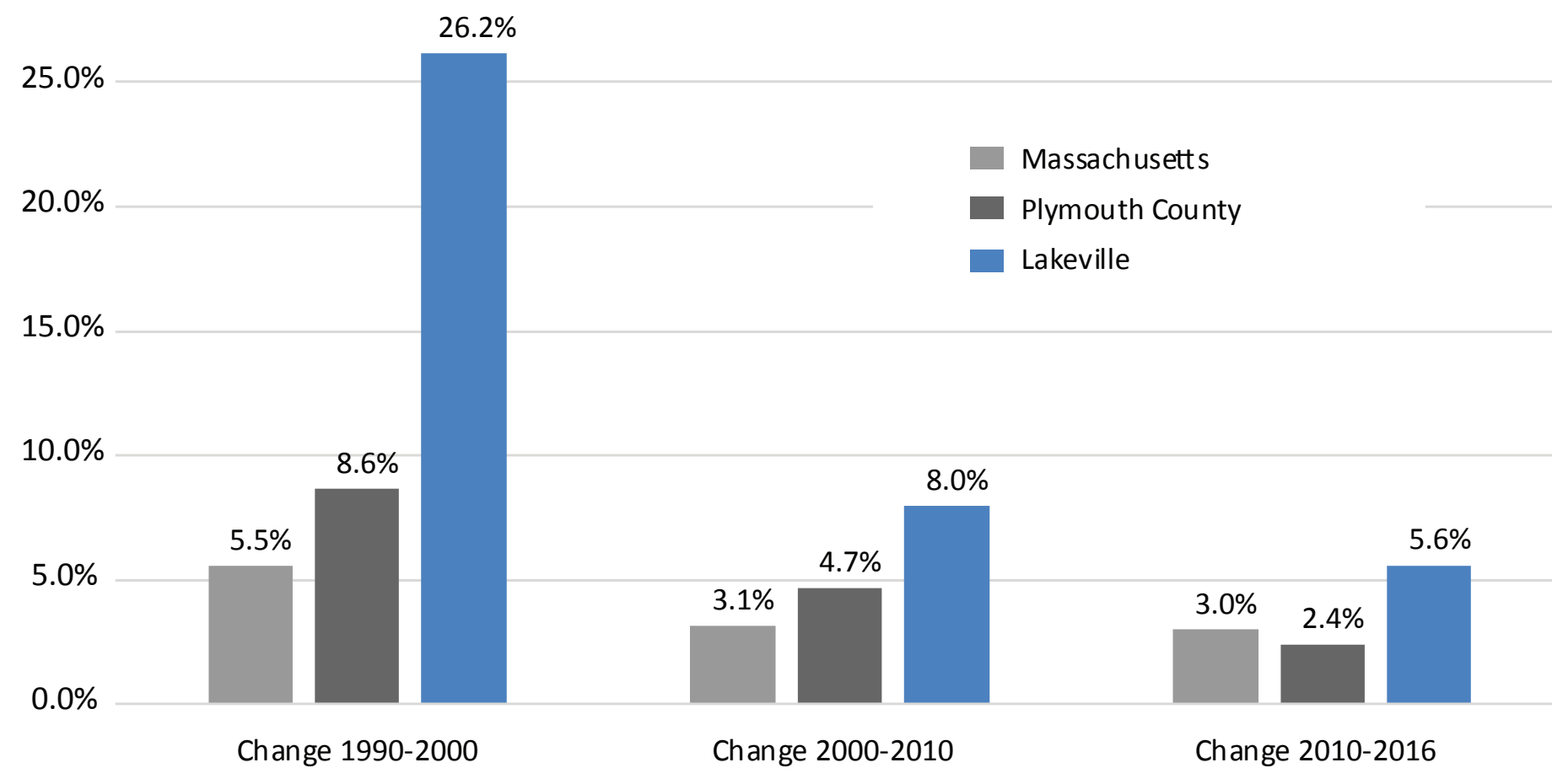


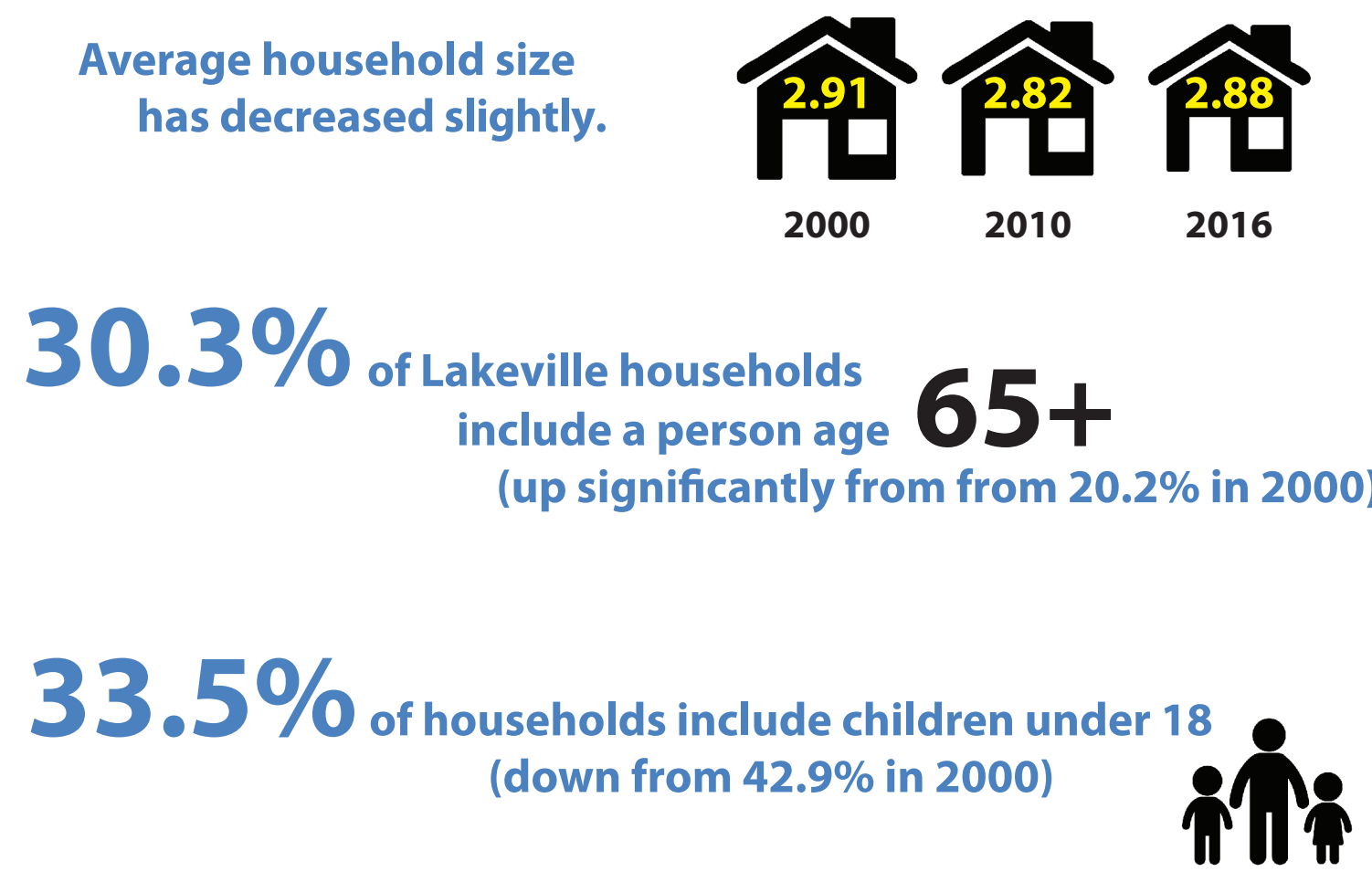
# Recent Demographic and Economic Information about Lakeville

## Population Growth Rates by Decade

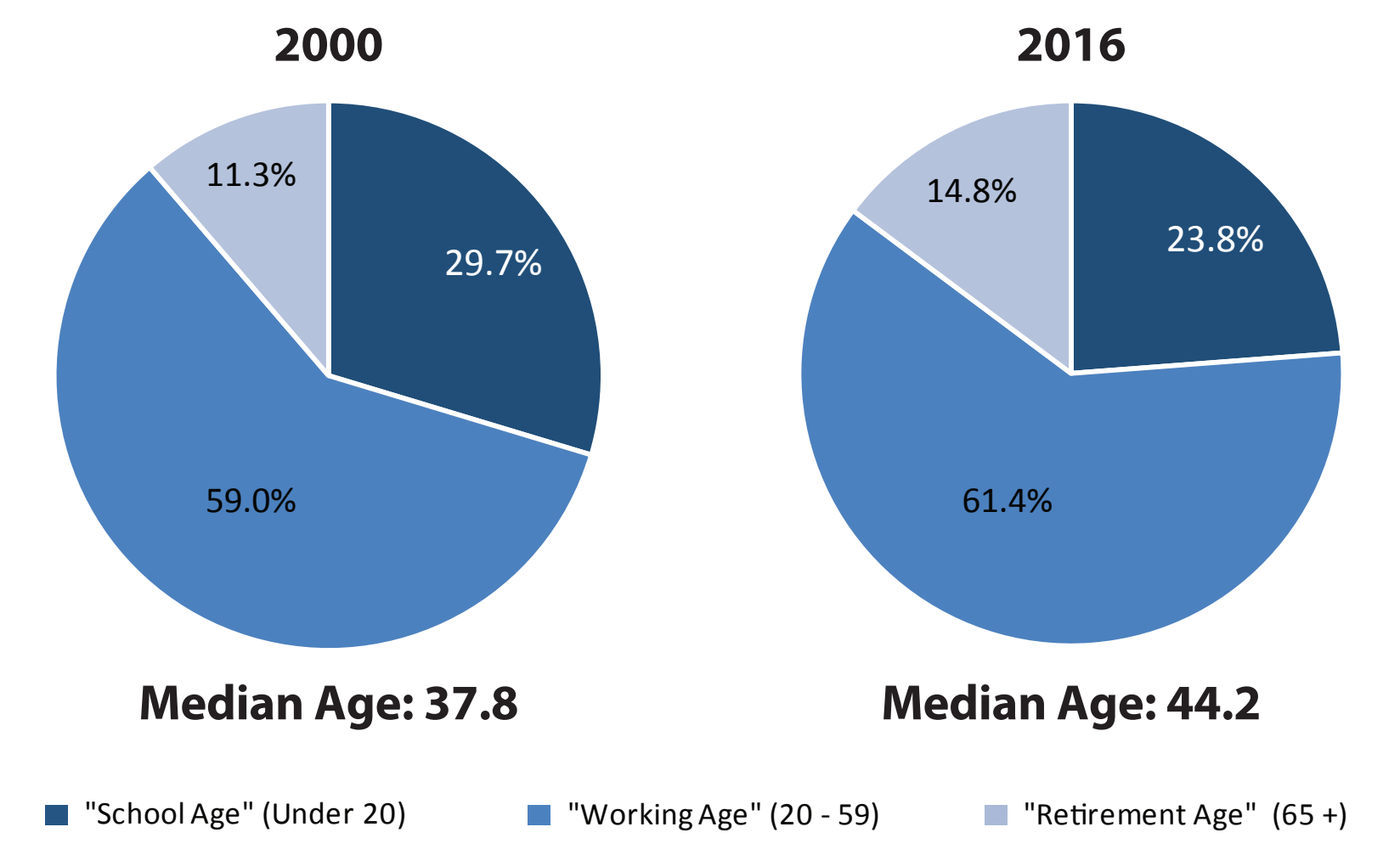


Lakeville's population was booming in the 1990s. The rate has slowed, but Lakeville is still growing at a faster rate than the state and Plymouth County.

## Households

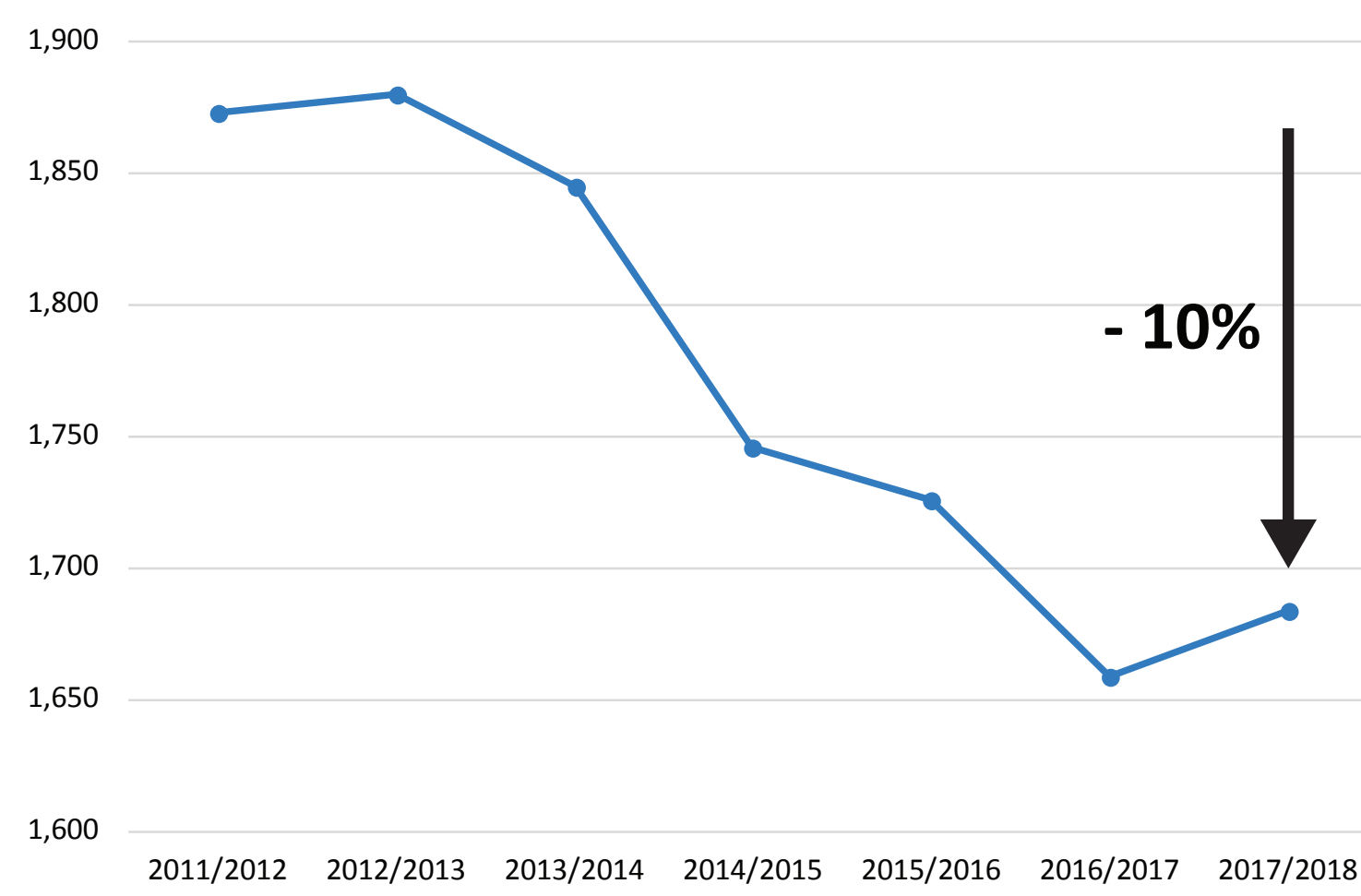


## Age Trends



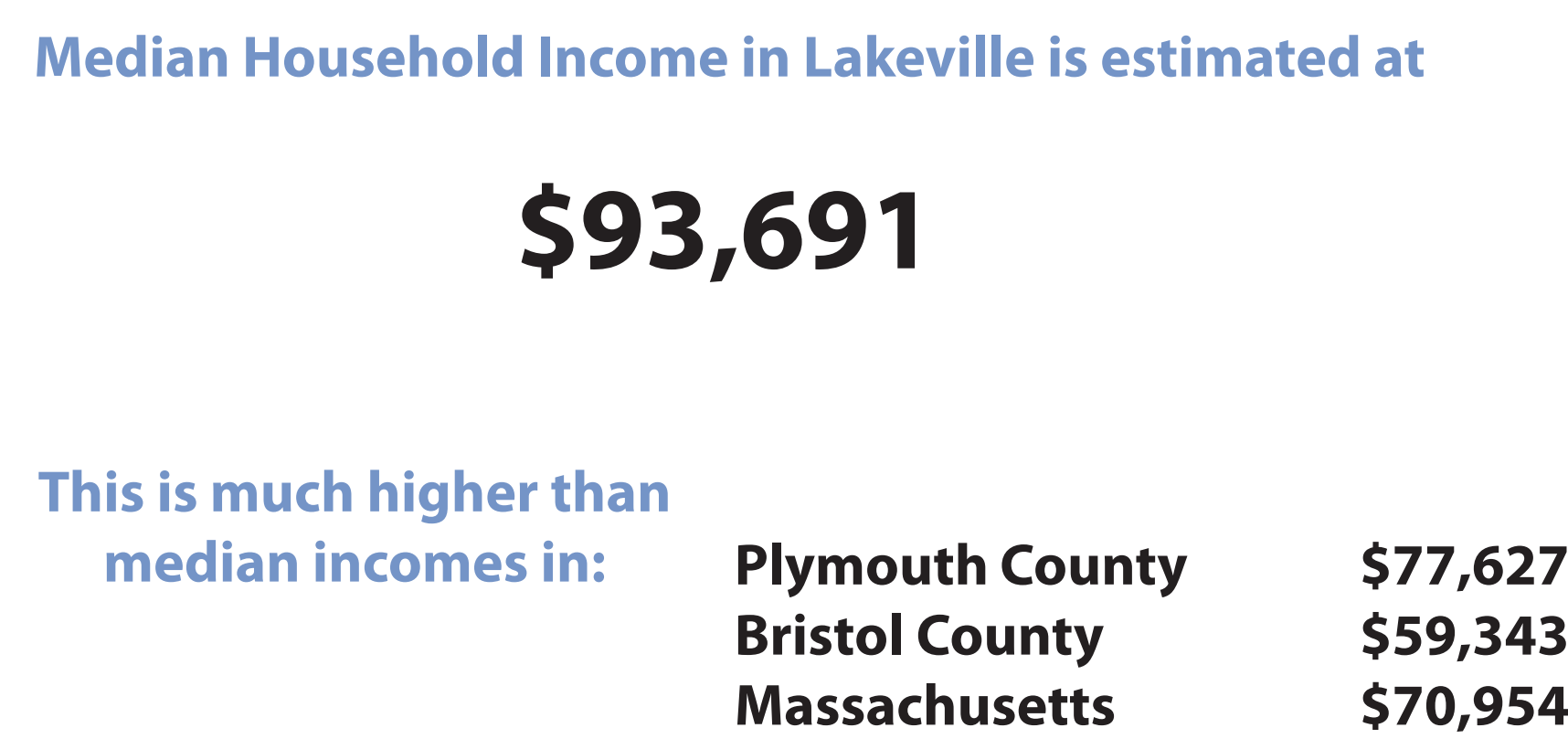
Lakeville's median age increased by 6 years from 2000 - 2016. The share of young, "School Age" people is declining.

## School Enrollment

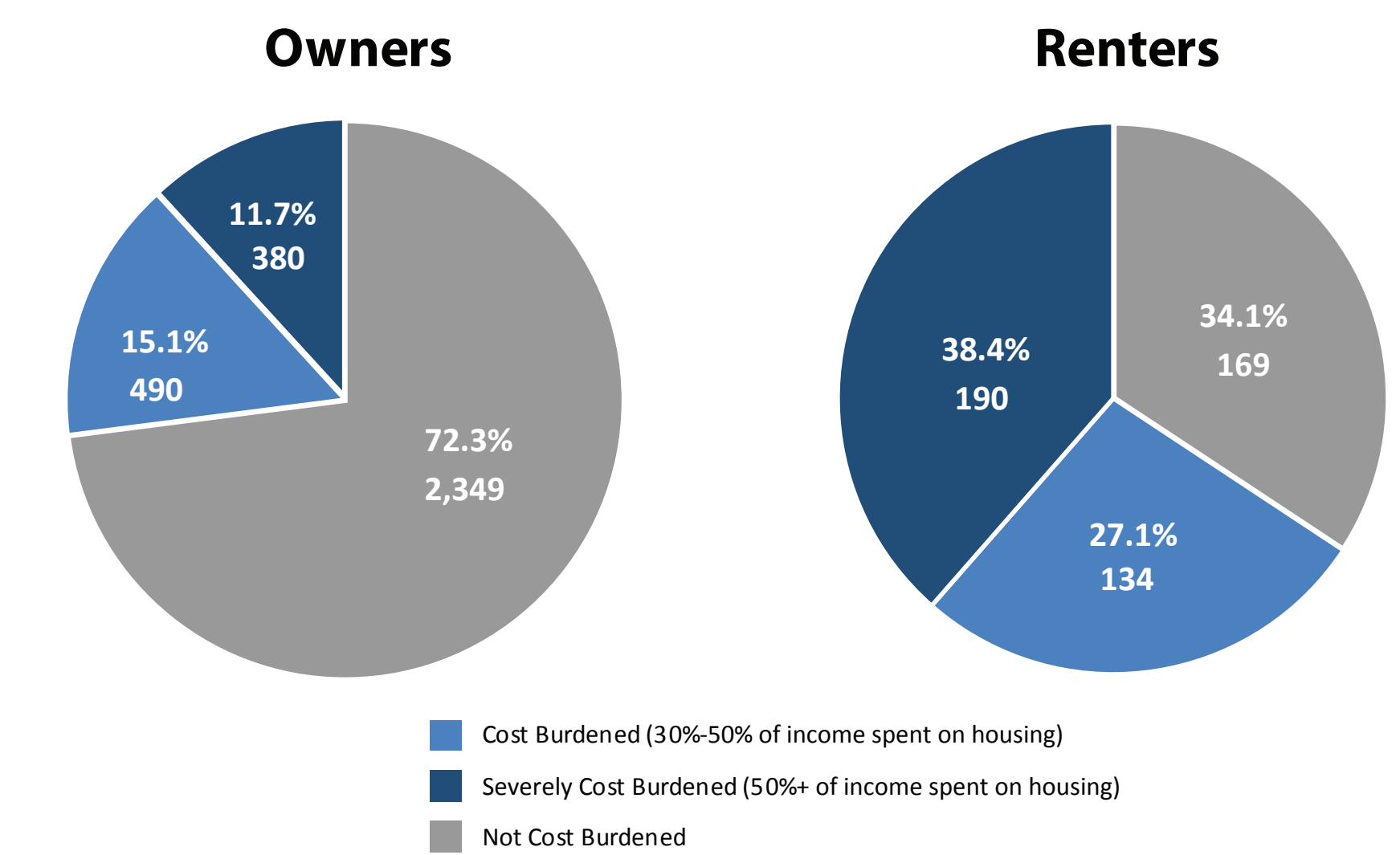


Lakeville's student population declined between 2012 and 2018.

## Income



## Households Spending More than 30% of Income on Housing



A quarter of owner households are experiencing housing cost burden. Two-thirds of renters are burdened, with many spending more than 50% of their income on housing.

## Lakeville's Subsidized Housing Inventory (SHI)

Community	2010 Census Year Round Housing Units	SHI Units	Percent
Berkley	2,169	24	1.1%
Freetown	3,263	86	2.6%
Lakeville	3,852	274	7.1%
Middleborough	8,921	589	6.6%
Rochester	1,865	8	0.4%
Taunton	23,844	1,529	6.4%

In order to gain more control over the Chapter 40B process, Lakeville must have 10% of its housing stock on the state SHI or meet annual production goals. It currently has 7.1%.

## Job Growth, 2006 - 2016

Jurisdiction	2006 Jobs	2016 Jobs	Percent Change
Berkley	643	654	1.7%
Freetown	3,757	4,062	7.5%
Lakeville	3,170	3,227	1.8%
Middleborough	8,596	9,381	8.4%
Rochester	735	780	5.8%
Taunton	25,653	23,351	-9.9%
SRPEDD	242,106	246,628	1.8%
Plymouth County	176,853	189,197	6.5%
Massachusetts	3,197,325	3,494,564	8.5%

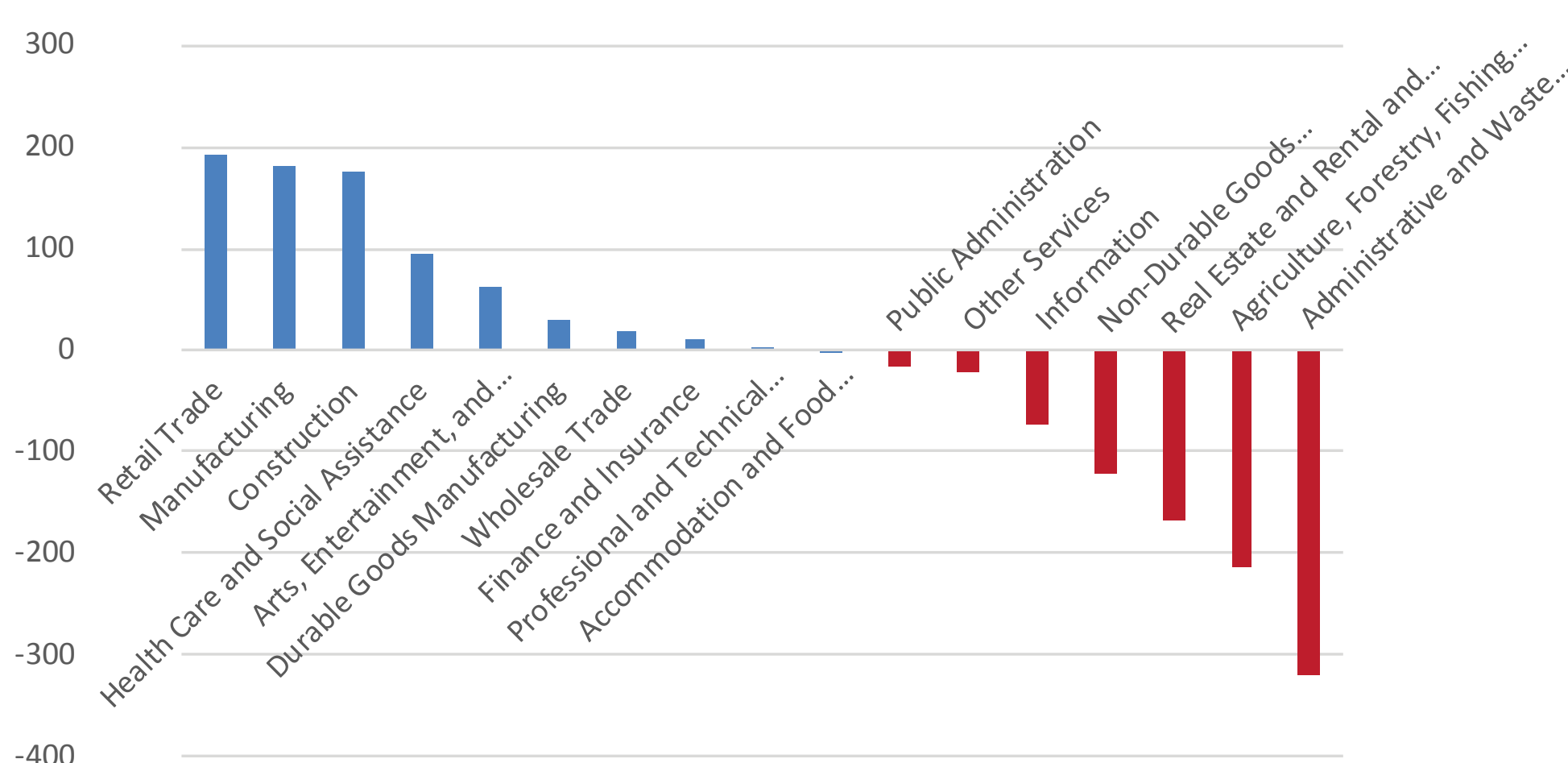
In the past ten years, Lakeville has gained about 57 jobs. Job growth was lower than most of its neighbors, the state, and the region.

## Jobs by Sector, 2006 - 2016

NAICS Code and Industry	2006 Jobs	2016 Jobs	% Change 2006-2016
11 - Agriculture, Forestry, Fishing and Hunting	229	15	-93.4%
23 - Construction	191	366	91.6%
31-33 - Manufacturing	73	255	249.3%
DUR - Durable Goods Manufacturing	118	147	24.6%
NONDUR - Non-Durable Goods Manufacturing	231	108	-53.2%
42 - Wholesale Trade	148	167	12.8%
44-45 - Retail Trade	17	210	1,135.3%
51 - Information	103	31	-69.9%
52 - Finance and Insurance	29	41	41.4%
53 - Real Estate and Rental and Leasing	200	32	-84.0%
54 - Professional and Technical Services	148	150	1.4%
56 - Administrative and Waste Services	450	132	-70.7%
62 - Health Care and Social Assistance	300	395	31.7%
71 - Arts, Entertainment, and Recreation	118	180	52.5%
72 - Accommodation and Food Services	114	113	-0.9%
81 - Other Services, Except Public Administration	104	83	-20.2%
92 - Public Administration	237	220	-7.2%
<b>Total, All Industries</b>	<b>3,170</b>	<b>3,227</b>	<b>1.8%</b>

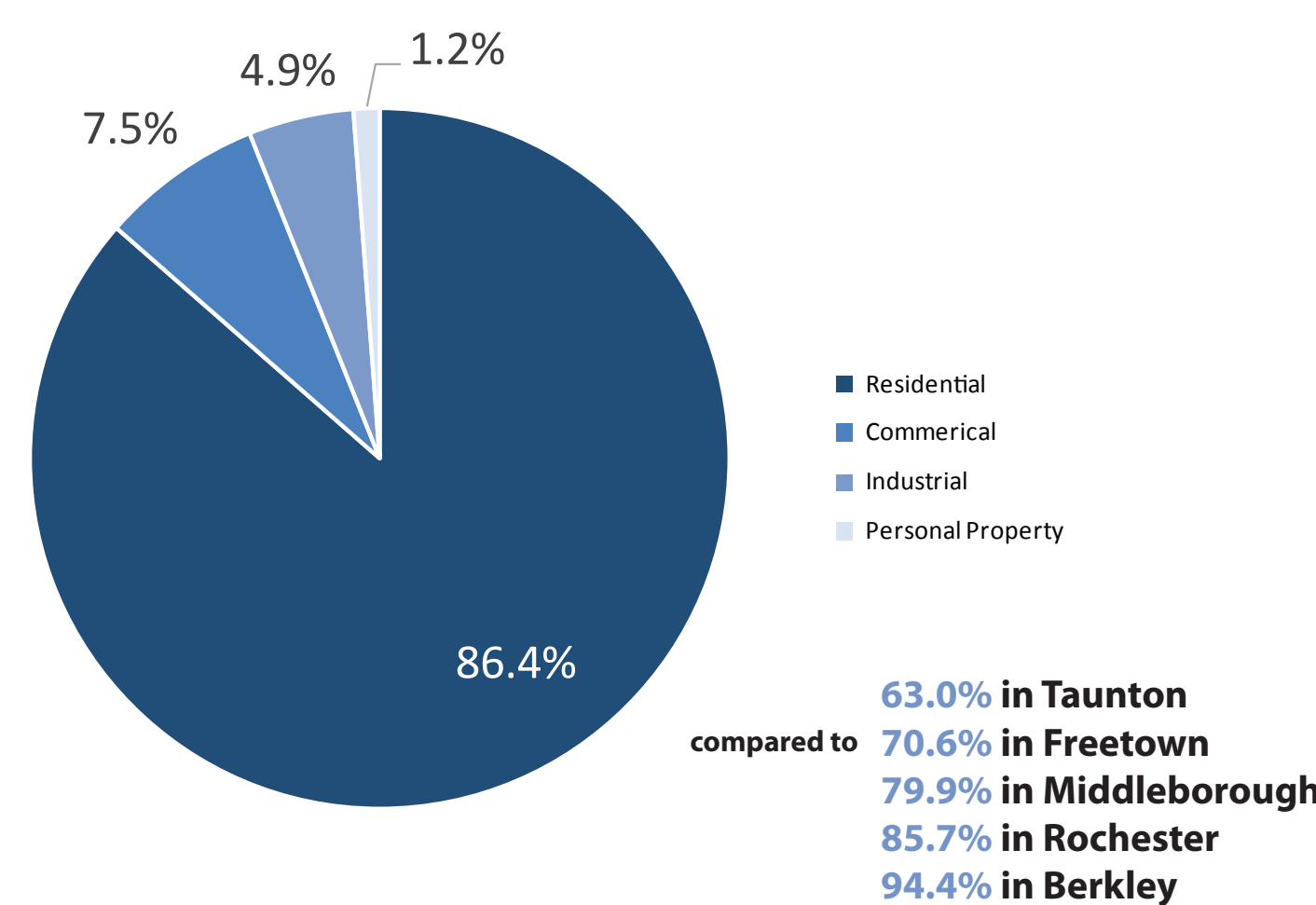
In 2016, the biggest industries in Lakeville (in total jobs) were health care, construction, and manufacturing.

## Job Growth by Sector, 2006 - 2016



Many job sectors saw large changes. In raw numbers of jobs, the biggest gains were in Retail, Manufacturing, and Construction. The biggest losses were in Agriculture and Real Estate.

## Tax Base, 2018



Lakeville's tax base is 86.4% residential. For FY2018, the average single family tax bill in Lakeville is \$4,669 compared to \$3,945 in Taunton, \$4,623 in Middleborough, and \$5,175 in Rochester.

## Tax Rates Per \$1,000 of Value (Millage Rates), 2018

Jurisdiction	Residential tax rate	Commercial tax rate
Berkley	\$14.02	\$14.02
Freetown	\$13.31	\$21.42
Lakeville	\$13.59	\$13.59
Middleborough	\$15.60	\$16.57
Rochester	\$14.11	\$14.11
Taunton	\$15.72	\$34.43

Lakeville has a flat tax rate (meaning that it taxes residential and commercial properties at the same rate). Compared to its neighbors, the town's tax rate is low.