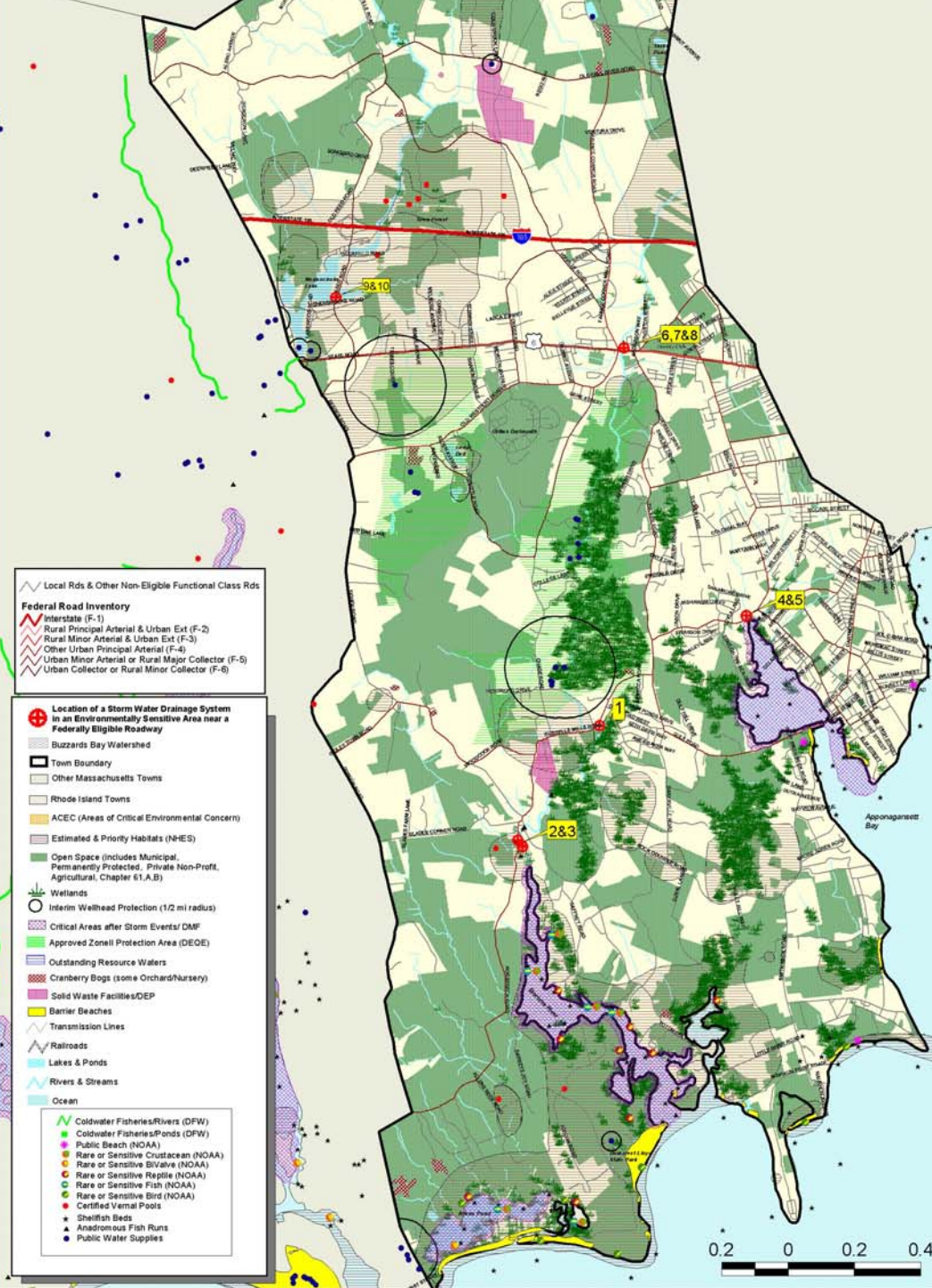


Town of Dartmouth, MA

GRRIP (Geographic Roadway Runoff Inventory Program)

All of Dartmouth falls
within the Buzzards Bay
Watershed



- Local Rds & Other Non-Eligible Functional Class Rds
- Federal Road Inventory**
 - Interstate (F-1)
 - Rural Principal Arterial & Urban Ext (F-2)
 - Rural Minor Arterial & Urban Ext (F-3)
 - Other Urban Principal Arterial (F-4)
 - Urban Minor Arterial or Rural Major Collector (F-5)
 - Urban Collector or Rural Minor Collector (F-6)
- Location of a Storm Water Drainage System in an Environmentally Sensitive Area near a Federally Eligible Roadway
- Buzzards Bay Watershed
- Town Boundary
- Other Massachusetts Towns
- Rhode Island Towns
- ACEC (Areas of Critical Environmental Concern)
- Estimated & Priority Habitats (NHES)
- Open Space (includes Municipal, Permanently Protected, Private Non-Profit, Agricultural, Chapter 61A,B)
- Wetlands
 - Interim Wellhead Protection (1/2 mi radius)
 - Critical Areas after Storm Events/DMF
 - Approved Zonell Protection Area (DEOE)
 - Outstanding Resource Waters
 - Cranberry Bogs (some Orchard/Nursery)
 - Solid Waste Facilities/DEP
 - Barrier Beaches
 - Transmission Lines
 - Railroads
 - Lakes & Ponds
 - Rivers & Streams
 - Ocean
- Coldwater Fishes/Rivers (DFW)
 - Coldwater Fishes/Ponds (DFW)
 - Public Beach (NOAA)
 - Rare or Sensitive Crustacean (NOAA)
 - Rare or Sensitive Bivalve (NOAA)
 - Rare or Sensitive Reptile (NOAA)
 - Rare or Sensitive Fish (NOAA)
 - Rare or Sensitive Bird (NOAA)
 - Certified Vernal Pools
 - Shellfish Beds
 - Anadromous Fish Runs
 - Public Water Supplies



1

Photo 1 is located in a wetlands of dense forest and understorey with direct discharge from road (at either end of wall in picture) into the Paskamansett River. In proximity to a Priority Habitat: Open Space, Zonell Wellhead Protection Area, Anadromous Fish Run, Public Drinking Supply Water, and a Solid Waste Facility. Road is in good condition with no evidence of flooding. Slope is 8-15% at point of discharge.



2



3

Photos 2&3 shows roadway drainage into a wetlands with dense forest and understorey. Located in proximity to a Recreation area, Priority Habitat, Open Space, a designated Critical Area after Storm Event, Anadromous Fish Run, Shellfish Beds, and a Certified Vernal Pool. Road is in good condition with some evidence of flooding. Slope of land 8-15% and greater at the point of discharge.



4



5

Photos 4&5 show a pipe and paved swale drainage system. River is chartered in an open coastal plain. Soil type condition is good. In proximity to wetlands; numerous Anadromous Fish Run; Open Space, and a designated Critical Area after Storm Event. Some evidence of flooding. Slope of land is between 15-35% at discharge points.



6



7



8

Photos 6,7&8 show drainage on a major roadway in a heavily developed commercial area. There is evidence of flooding to the south side of Route 6 (behind a Formal Wear Shop). The system is located in a partially vegetated forested wetland area in proximity to a Priority Habitat, Open Space, Anadromous Fish Run, a Zone II Protection area and a Public Drinking Water Supply. The system is located at an abandoned Service Station. Rubbish and crumbled pavement are evident. Slope is 3-35% overall to the point of discharge.

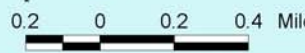


9



10

Photos 9&10 show a drainage system in a Recreation area. Stormwater is directed through a clear cut and flow has cut rills. In proximity to wetlands; a Priority Habitat, Open Space, Interim Wellhead Protection area, a Zone II protection area, Certified Vernal Pools and a Public Water Supply. Condition of roadway is fair to poor with direct discharge into the lake. Overall slope is 8-36% at point of discharge.



The SRPEDD (Southeastern Regional Planning and Economic Development District) is a regional planning organization serving the towns of: Acushnet, Carver, Dartmouth, Fall River, Fall River Bredon, Lakeside, Marion, Mattapoisett, Middleborough, New Bedford, Rochester, Wareham, Westport.



Map Prepared by SRPEDD
Southeastern Regional Planning & Economic Development District
Tisbury, MA
June 2008

The GRRIP (Geographic Roadway Runoff Inventory Program) is an analysis of roadway drainage facilities in relation to intersecting environmentally sensitive areas on defined Federal A/E/H functionally classed roads. The GRRIP project analyzed 14 SRPEDD towns within the Buzzards Bay Watershed Region and mapped those storm water drainage systems considered to be located in critically sensitive environmental areas.

The Towns are Acushnet, Carver, Dartmouth, Fall River, Fall River Bredon, Lakeside, Marion, Mattapoisett, Middleborough, New Bedford, Rochester, Wareham, Westport.

This map was produced by SRPEDD (Southeastern Regional Planning and Economic Development District) Tisbury, MA. Portions of the source digital data may have been supplied by the Massachusetts Executive Office of Environmental Affairs, MassDOT, Caliper Corporation of Newton, MA, Essex and Suffolk Transportation Planning & Development, Division of Marine Fisheries, Division of Fisheries & Wildlife, Buzzards Bay Project, USGS, Soils Conservation Service, Coastal Zone Management, National Oceanic & Atmospheric Administration (NOAA).

The location of feature boundaries shown on this map are approximate and are intended for planning purposes only. This map is not intended for legal, engineering or survey purposes.

The funding for this project was provided by the Executive Office of Transportation (EOTC) and the Massachusetts Highway Department under the STP Transportation Enhancements Program.