



Route 28 Corridor Study

Virtual Public Workshop

March 13, 2024



Introductions



SRPEDD Staff

- Sean Hilton, Senior Transportation Planner
- Andrea Duarte, Transportation Outreach Coordinator
- Jackie Jones, Assistant Director of Transportation Planning
- Lisa Estrela-Pedro, Transportation Planning Manager
- Jonathan Gray, Transportation Planner

Town Staff

Workshop Agenda

- Short presentation and study overview
- Q&A if needed
- Time to provide public comment



Project Purpose and Goals

- **Study initiated by the town of Rochester to:**
 - Address transportation improvements and future land uses
 - Help deepen connections between the 3 towns for all transportation modes
 - Create a shared vision between the towns for future development on this part of Route 28
- **Use available and collected data to identify context-sensitive transportation improvements**

Corridor Overview

- Covers approximately 8 miles of roadway in Middleborough, Rochester, and Wareham
- Extends from Cushman Street in Middleborough to Charlotte Furnace Road in Wareham
- Includes industrial, commercial, and residential uses, 1 signalized intersection
- Serviced by GATRA Link 4 bus, limited bicycle and pedestrian facilities
- Rochester is awaiting development of potential ~200-unit housing development at Route 28 and Route 58
- Wareham is anticipating increased commercial development on Route 28



Study Components

Existing Conditions Analysis

Traffic operations

- Speed, volume, type of vehicles
- Count/direction of vehicles, bikes, pedestrians entering/exiting intersections
- Pavement condition

Zoning patterns

Transit usage

- Bus stop locations, ridership numbers, problem areas

Bicycle and pedestrian conditions

- Sidewalk, crosswalk, bike facility locations & conditions

Crash numbers, severity, hotspots

Environmentally sensitive areas

Background of local households & potential barriers (age, disability, vehicle ownership, English proficiency, income)

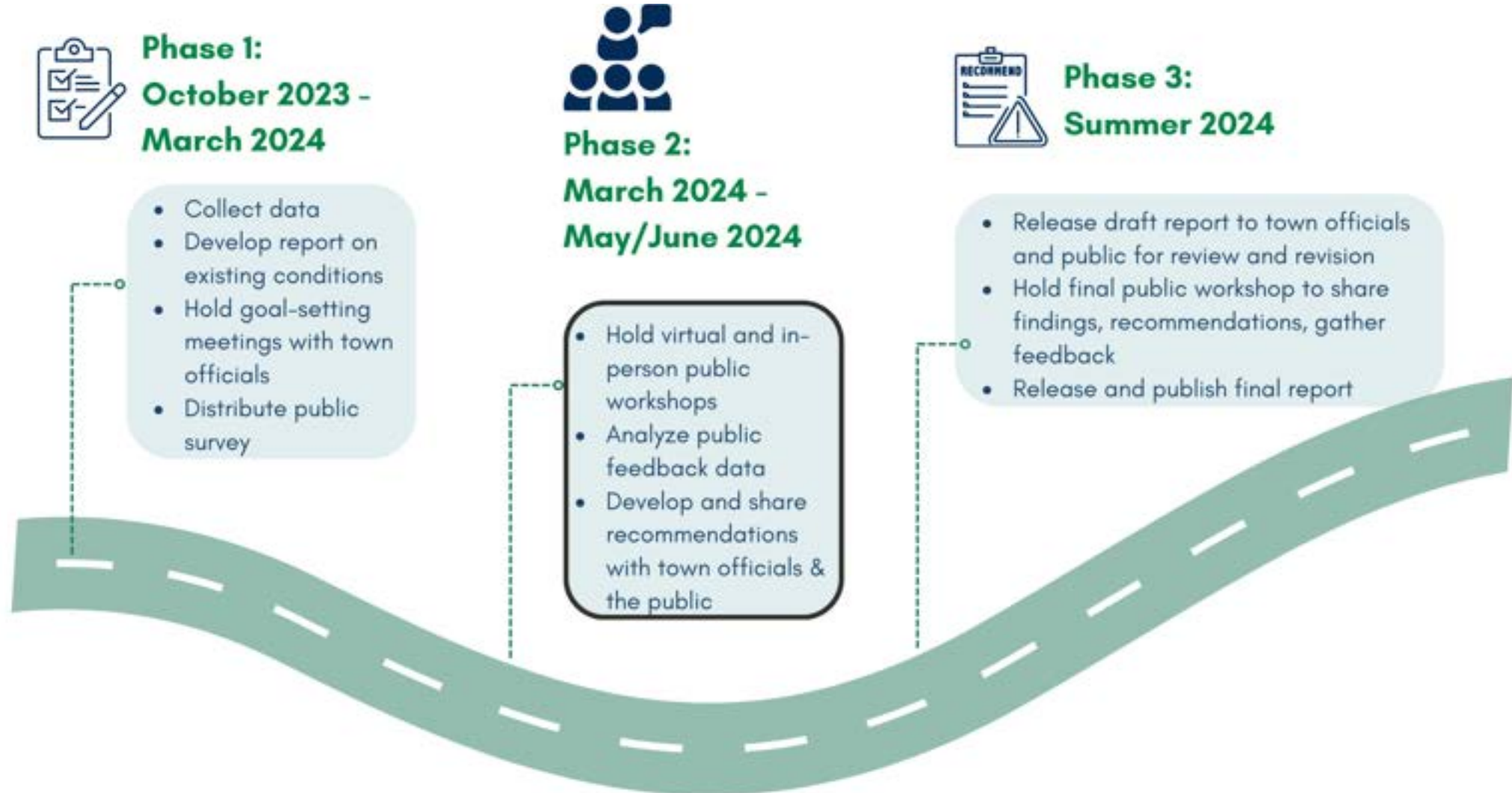
Future Conditions

- Examine incoming developments and potential impact on corridor
- Consider government officials' & local communities' goals for potential improvements

Recommendations

- Use data collected from public input, field measurements, other reports, & stakeholder meetings to make recommendations for improvements on the corridor
- Consider safety, improvements for all transportation modes, alternative uses of land, opportunities for increased connection between 3 towns

Project Timeline and Process



Ongoing Public Engagement

- **Study Website:** srpedd.org/Route28

- Public survey
- Interactive crowdsource map
- Closing date: April 15, 2024
- Ongoing updates

- **In-person workshop**

March 19th at Wareham Multi-Service Center

54 Marion Road, Wareham, MA

- **Contact**

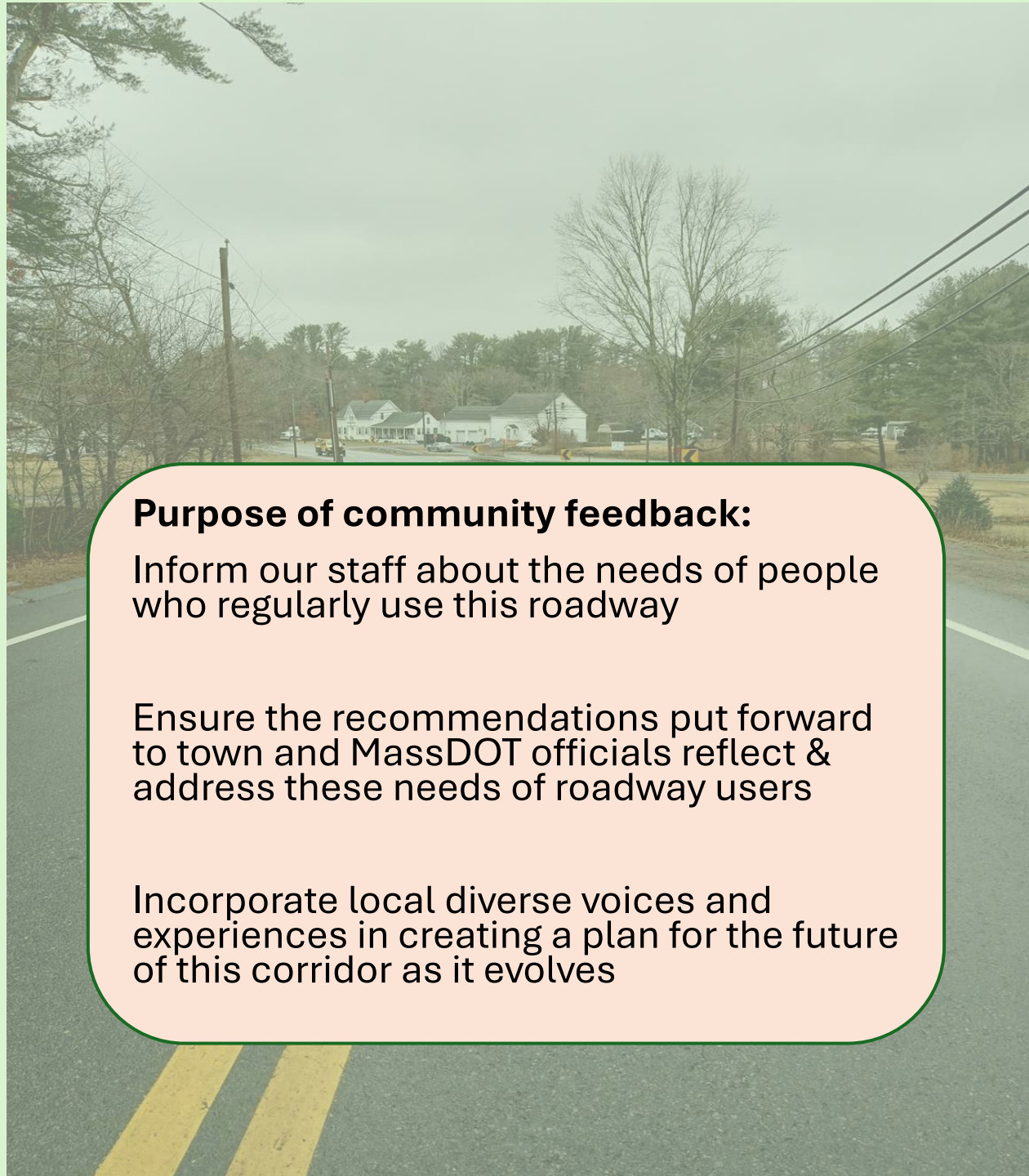
- Sean Hilton shilton@srpedd.org
- Andrea Duarte aduarte@srpedd.org
- 508-824-1367
- Srpedd.org/Route28

Purpose of community feedback:

Inform our staff about the needs of people who regularly use this roadway

Ensure the recommendations put forward to town and MassDOT officials reflect & address these needs of roadway users

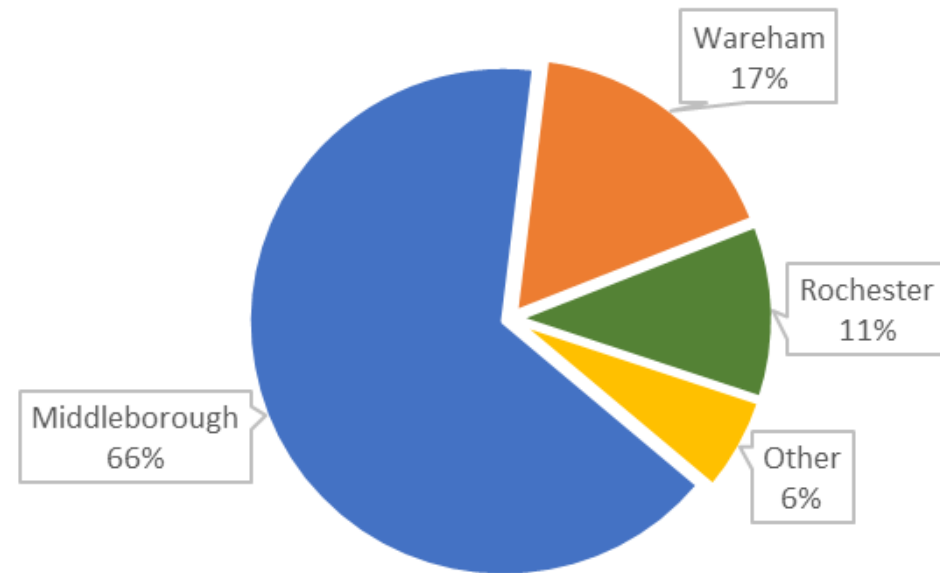
Incorporate local diverse voices and experiences in creating a plan for the future of this corridor as it evolves



Survey Feedback So Far...

- Nearly 200 surveys received
- Majority of respondents reported:
 - Driving alone (96%)
 - Traveling on Route 28 at least 2-3 times per week (74%)
 - Issues turning in and out of side streets (51%)
 - Issues with high speeds of vehicles (51%)

Response by Town



Workshop Format

To sign up for project updates:
provide your name and email
at <https://lp.constantcontactpages.com/sl/bQxuAkE/Route28>

<https://srpedd.maps.arcgis.com/apps/CrowdsourcingReporter/index.html?appid=7aa026d342bb4b8bbb9a5c280b429a17>

